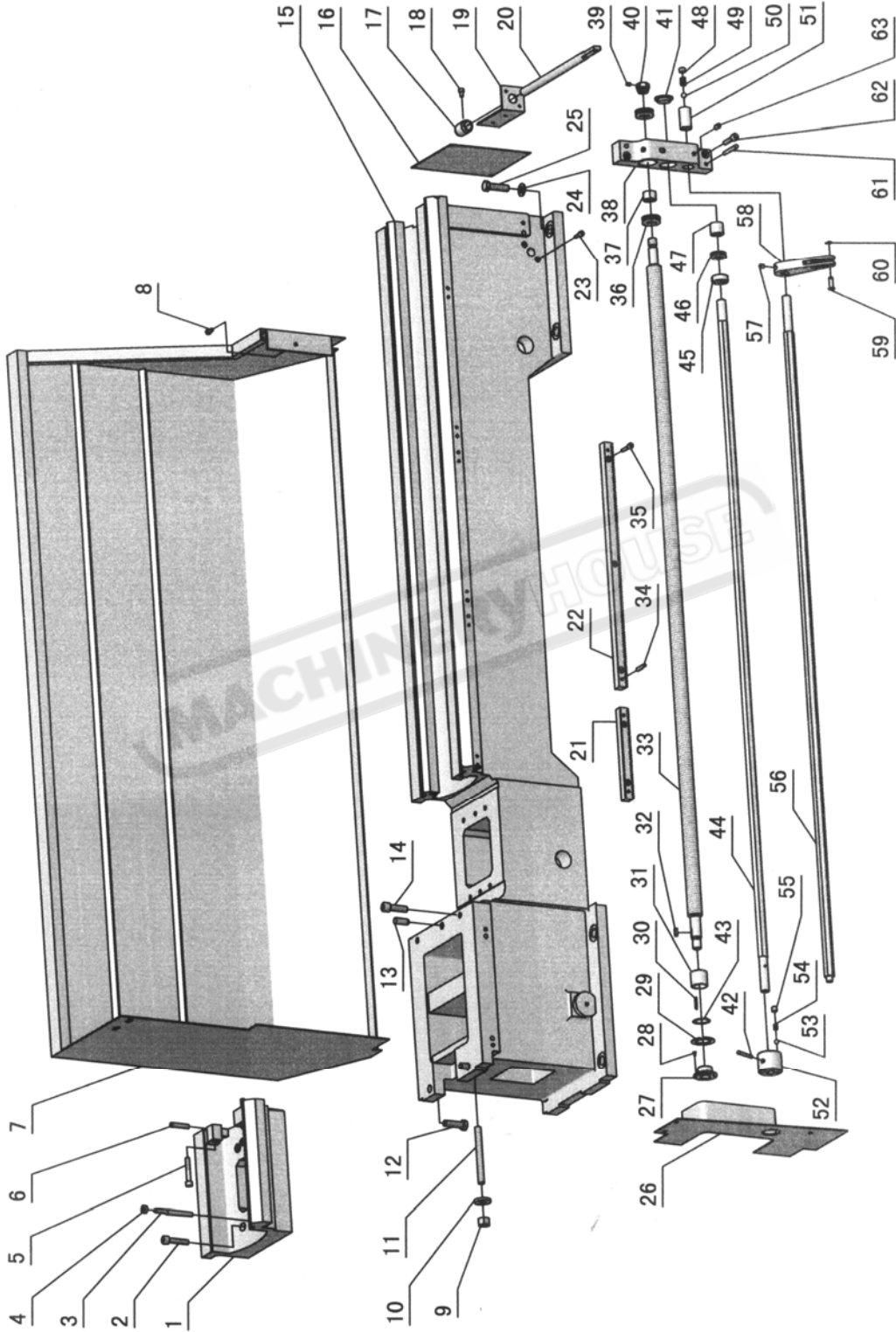
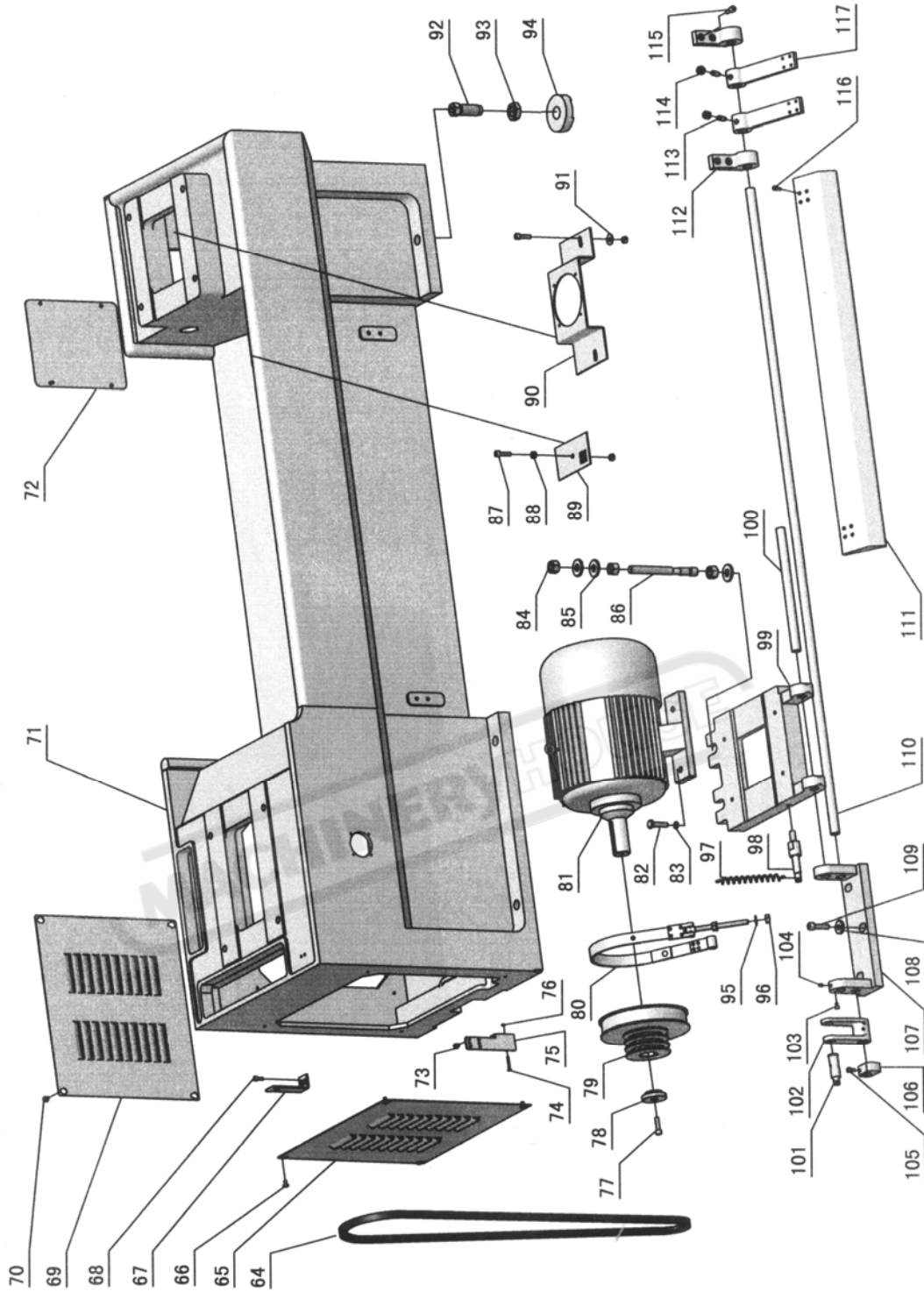


15.3 Electric Listing Component

No.	Type	Name	Specification	Qty
1	SA	High/Low/Stop Switch	LW8PS-25/M10T	1
2	SA0	Main Switch	LW8GS-25/30000-A	1
3	QM1	Breaker	GV2 2.5-4A	1
4	QM2	Breaker	DZ451-63 2P C1	1
5	QM3	Breaker	DZ451-63 1P C5	1
6	QM4	Breaker	DZ451-63 1P C2	1
7	FR1	Thermal overload relay	3UA5940 6.3-10A	1
8	FR2	Thermal overload relay	3UA5940 0.4-0.63A	1
9	KM1,2	AC Contactor	3TB4122 AC24V 50/60Hz	2
10	KA0	Relay	3TH8262 AC24V 50/60Hz	1
11	KA1	Relay	3TH8262 AC24V 50/60Hz	1
12	TC	Control Transformer	JBK5-160	1
13	KT	Time Relay	ST3PA AC24V	1
14	VA	Rectifier	3TQL 250V 12A	1
15	HL	Pilot Lamp	LA103-M/32 AC24V	1
16	EL	Working Lamp	JC34A AC24V	1
17	SQ4,5	Switch For FWD-REV	LXW5-11G2	2
18	SQ1	Switch For Brake	LXW5-11N1	1
19	SQ2	Switch For Chuck	LXW5-11Q1	1
20	SQ3	Switch For Position	QKS8-6080103201	1
21	SB0	Emergency Button	LA103-01ZS/1	1
22	SB1	Button	LA103-10/3	1
23	SB2	Button	LA103-10X/3	1
24	M1	Main Motor	YD132M2-8/4	1
25	M2	Coolant Pump	AB25	1

16 Bed assembly



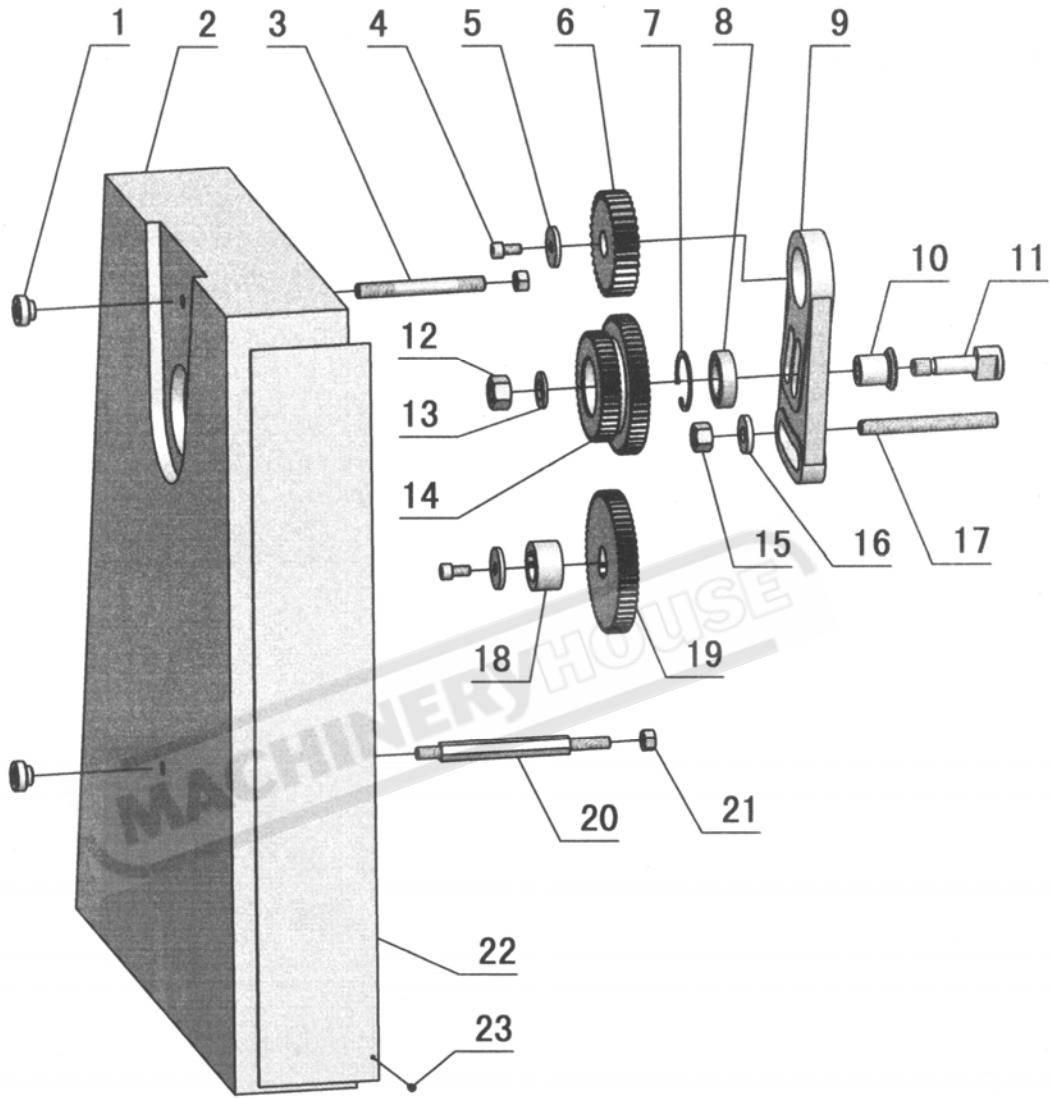


No.	Part No.	Name	Specification
1	CD6236-01-27	Gap Block	
2	GB70-85	Socket Head Cap Screw	M10×45
3	GB881-86	Taper Pin	8×85
4	GB6170-86	Nut	M8
5	GB70-85	Socket Head Cap Screw	M8×50
6	GB118-86	Pin	8×40
7	CD6236-01-26	Guard Assy	
8	GB70-85	Socket Head Cap Screw	M6×12
9	GB41-76	Nut	M14
10	CD6236-01-44	Washer	45
11	CD6236-01-43	Screw	
12	GB21-76	Bolt	M12×40
13	GB119-86	Pin	12×30
14	GB70-85	Socket Head Cap Screw	M12×40
15	CD6236-01-45	Bed	
16	CD6236-01-54	Cover	
17	CD6236-01-12	Block	
18	GB70-85	Socket Head Cap Screw	M6×10
19	CD6236-01-19	Hold	
20	CD6236-01-22	Rod	
21	CD6236-01-28	Rack	
22	CD6236-01-34	Rock	
23	GB70-85	Socket Head Cap Screw	M6×20
24	GB97.1-86	Washer	12
25	GB5783-86	Bolt	M12×45
26	CD6236-01-25	Cover	
27	CD6236-01-30	Sleeve	
28	CD6236-01-31	Pin	
29	CD6236-01-32	Washer	
30	GB2089-80	Spring	1.8×2.5×55
31	CD6236-01-33	Cover	
32	GB1567-86	Key	5×16
33	CD6236-01-37	Lead Screw(Inch)	
33	CD6236-01-37G	Lead Screw(Metric)	
34	GB879-86	Spring Pin	6×30
35	GB70-85	Socket Head Cap Screw	M6×30
36	GB301-84	Thrust Bearing	8203
37	CD6236-01-39	Sleeve	
38	CD6236-01-42	Bracket	
39	GB78-85	Set Screw	M6×8

No.	Part No.	Name	Specification
40	CD6236-01-41	Nut	
41	CL6132-06-11	Plug	
42	GB117-86	Taper Pin	5×45
43	GB894.2-86	External circlip	28
44	CD6236-01-36	Feed Rod	
45	CD6236-01-38	Sleeve	
46	GB301-84	Thrust Bearing	8103
47	CD6236-01-40	Sleeve	
48	GB77-85	Set Screw	M12×8
49	GB2089-80	Spring	1×9×20
50	GB308-84	Steel Ball	9.5
51	CD6236-01-55	Sleeve	
52	CD6236-01-29	Clutch	
53	GB308-84	Steal Ball	8
54	GB2089-80	Spring	1.2×6×46
55	GB77-85	Screw	M10×10
56	CD6236-01-35	Started Rod	
57	GB77-85	Screw	M8×8
58	CD6236-01-23	Lever	
59	CD6236-01-21	Pin	
60	GB896-86	Circlip	6
61	GB117-86	Taper Pin	6×50
62	GB70-85	Socket Head Cap Screw	M8×35
63	GB80-85	Screw	M8×14
64	GB1171-74	V13-1890	
65	RUN6141-106028	Cover	
66	GB818-85	Cross Screw	M6×10
67	RUN6246-108078	Limited Switch Seat	
68	GB70-85	Socket Head Cap Screw	M6×16
69	RUN6141-106028-01	Cover	
70	GB818-85	Cross Screw	M6×10
71	CD6236-01-01A	Stand	
72	RUN6246-106033	Cover	
73	GB818-85	Cross Screw	M6×10
74	GB818-85	Screw	M4×30
75	CD6236-01-59	Limited Switch Seat	
76	GB6172-86	Nut	M4
77	GB70-85	Socket Head Cap Screw	M8×30
78	RUN6141-106049a	Washer	
79	CD6236-01-05	Belt Pulley	

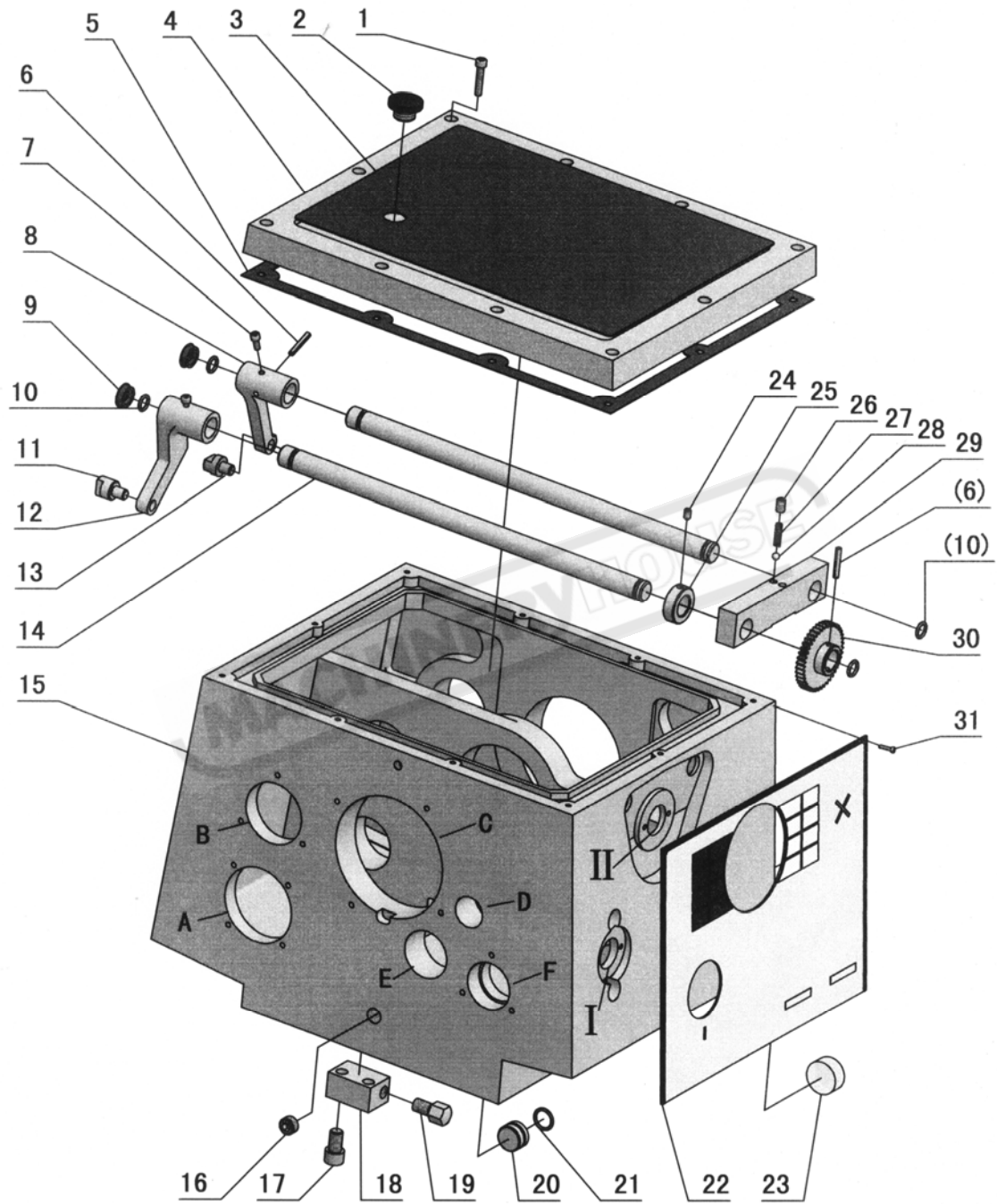
No.	Part No.	Name	Specification
80	RUN6141-106047	Belt Brake	
81	Y132M-8/4	Motor	
82	GB30-76	Bolt	M10×40
83	GB93-86	Washer	10
84	GB41-76	Nut	M16
85	RUN6141-106079	Washer	
86	RUN6141-106046	Screw	
87	GB70-85	Socket Head Cap Screw	M8×30
88	GB6170-86	Nut	M8
89	RUN6246-106051	Screen	
90	RUN6246-106090A	Coolant Pump Seat	
91	GB96-85	Washer	8
92	RUN6246-106029	Bolt	
93	GB6173-86	Nut	M24×2
94	RUN6246-106069	Block-Leveling	
95	GB97.1-85	Washer	10
96	GB6170-86	Nut	M10
97	Q81-3	Spring	3×16×115
98	RUN6246-106050	Shaft	
99	RUN6141-106034	Motor Seat	
100	RUN6246-106044	Shaft	
101	RUN6141-106039	Shaft	
102	RUN6141-106040	Arm Brake	
103	GB70-85	Socket Head Cap Screw	M5×8
104	GB80-85	Screw	M6×8
105	GB70-85	Socket Head Cap Screw	M6×12
106	RUN6141-106037	Cam	
107	RUN6141-106041	Bracket Motor Seat	
108	RUN6246-106097	Washer	
109	GB70-85	Screw	M10×40
110	RUN6141-106050	Shaft	
111	CD6236-01-51	Pedal Brake	
112	RUN6141-106036	Bracket	
113	GB79-85	Screw	M10×25
114	GB6170-86	Nut	M10
115	GB70-85	Screw	M8×20
116	GB70-85	Screw	M6×16
117	RUN6141-106042	Arm	

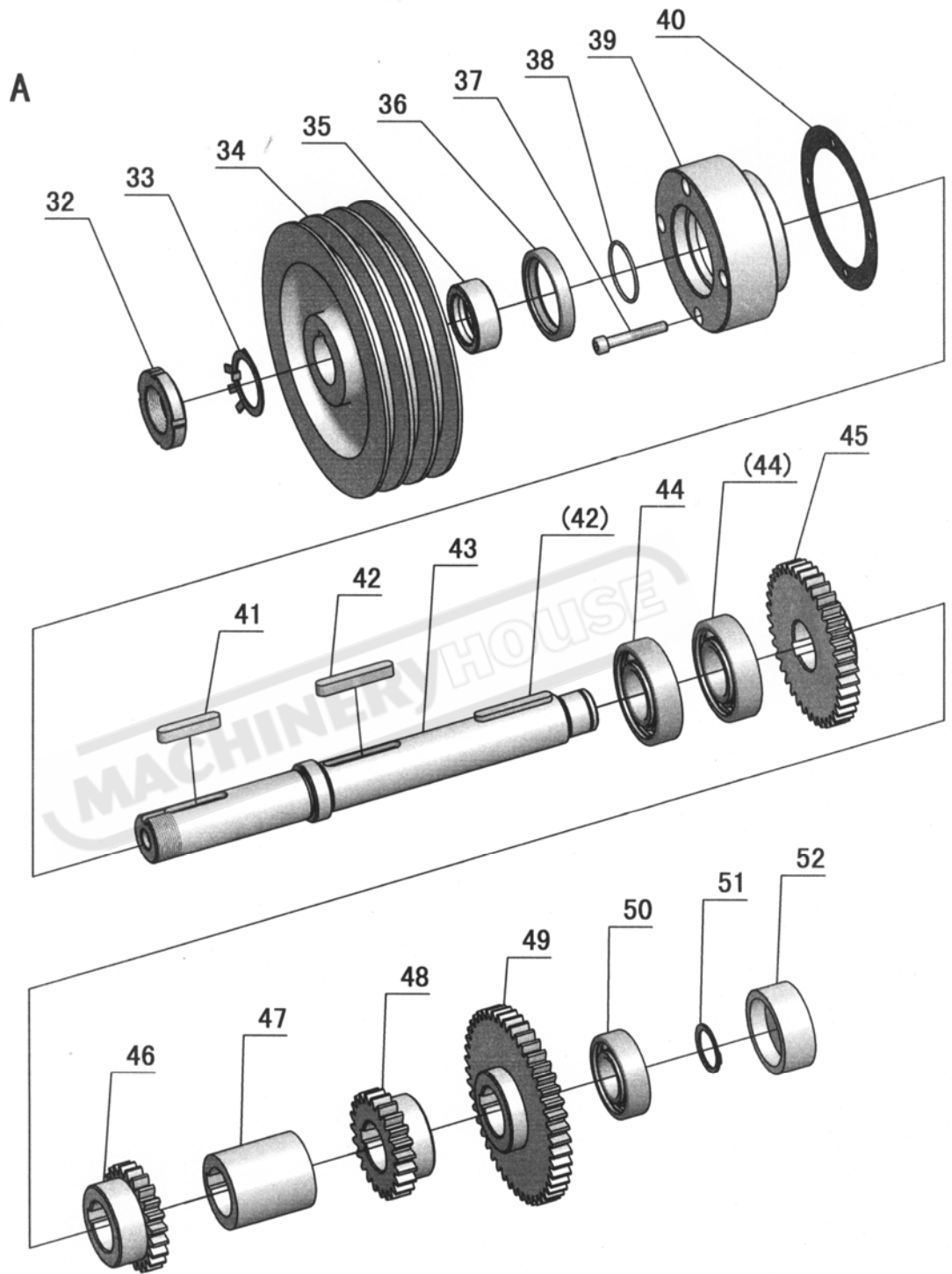
17. Change gear

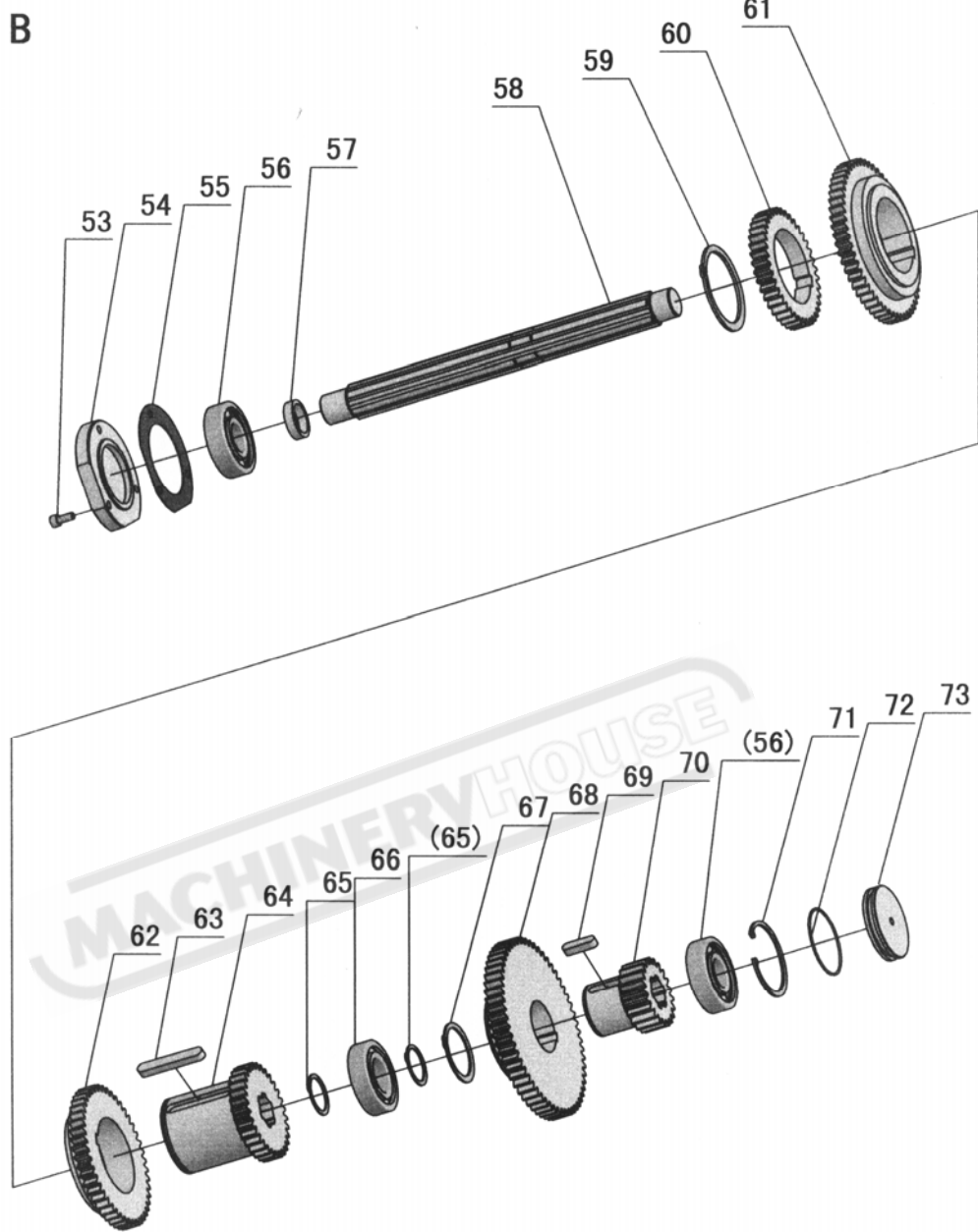


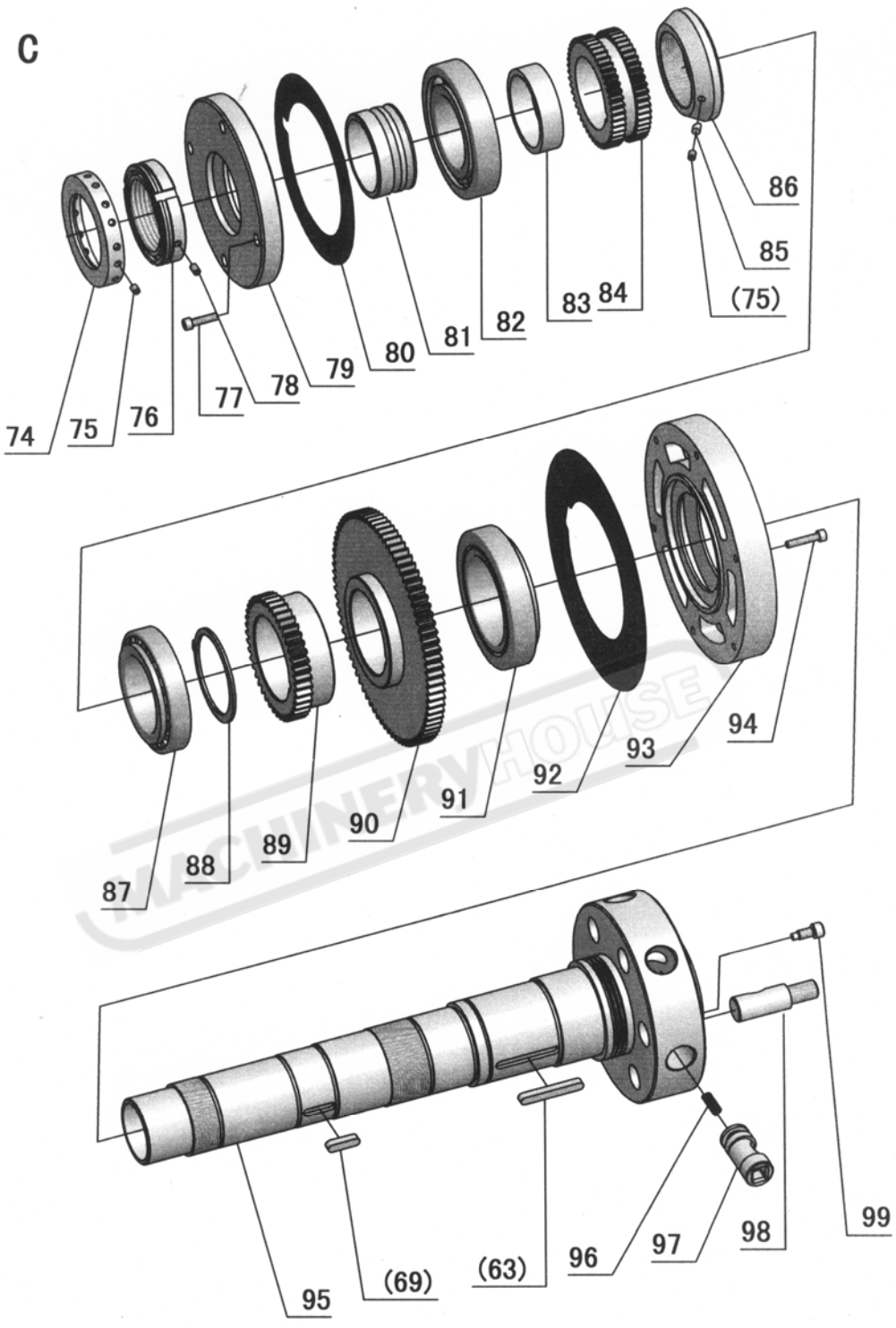
No.	Part No.	Name	Specification
1	CL6132-04-77	Nut	
2	CD6236-04-72	Cover(360)	
2	CD6240-04-72	Cover(410)	
3	GB900-88	Bolt	M10×85
4	GB70-85	Socket Head Cap Screw	M8×16
5	CD6240-05-02	Washer	
6	CD6240-04-53G1	Change Gear	Metric(33T)
6	CD6236-04-53	Change Gear(360)	Inch(24T)
6	CD6240-04-53	Change Gear(410)	Inch(24T)
7	GB893.1-86	Circlip	47
8	GB279-88	Roller Bearing	160105
9	CD6240-05-10	Swing France	
10	CD6236-05-06	Sleeve	
11	CD6236-05-05	Shaft	
12	GB6172-86	Nut	M14
13	GB97.1-84	Washer	14
14	CD6240-05-09G1	Change Gear	Metric(35/48T)
14	CD6236-05-09	Change Gear(360)	Inch(44/52T)
14	CD6240-05-09	Change Gear(410)	Inch(44/52T)
15	GB41-76	Nut	M14
16	CD6236-01-44	Washer	45
17	CD6236-01-43	Screw	
18	CD6236-05-03	Sleeve	
19	CD6240-05-04G1	Change Gear	Metric(54T)
19	CD6236-05-04	Change Gear(360)	Inch(57T)
19	CD6240-05-04	Change Gear(410)	Inch(57T)
20	CD6236-01-24	Bolt	
21	GB54-76	Nut	M10
22	CD6236-04-71	Plate	
23	GB818-85	Screw	M3×8

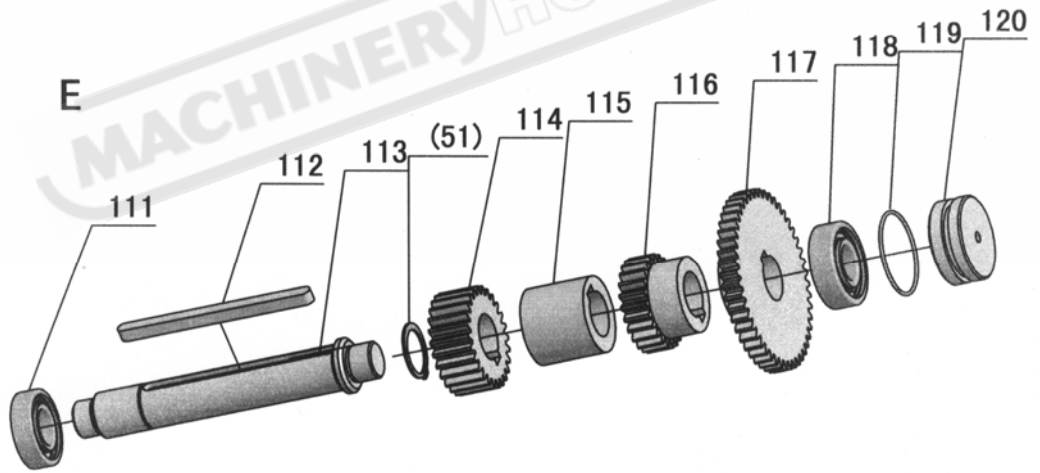
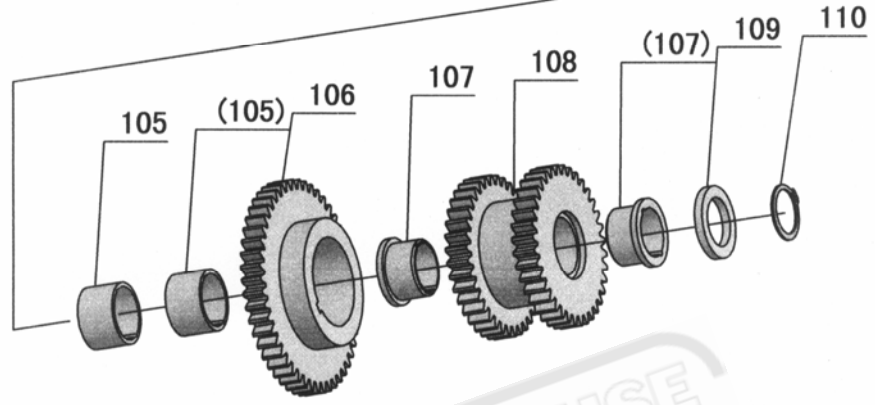
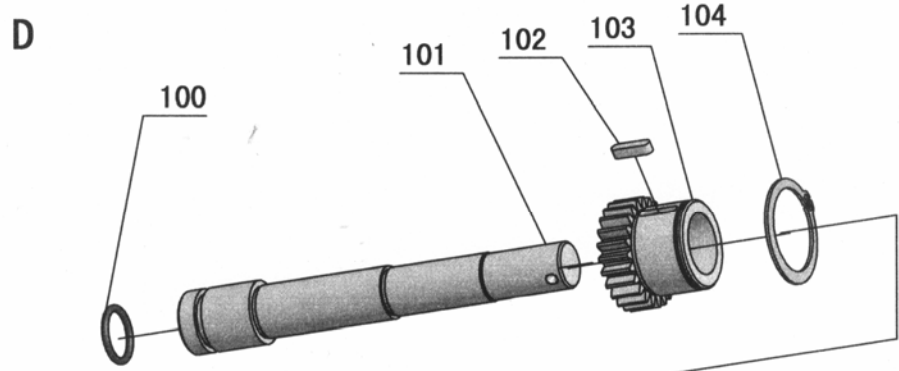
18. Headstock Assembly



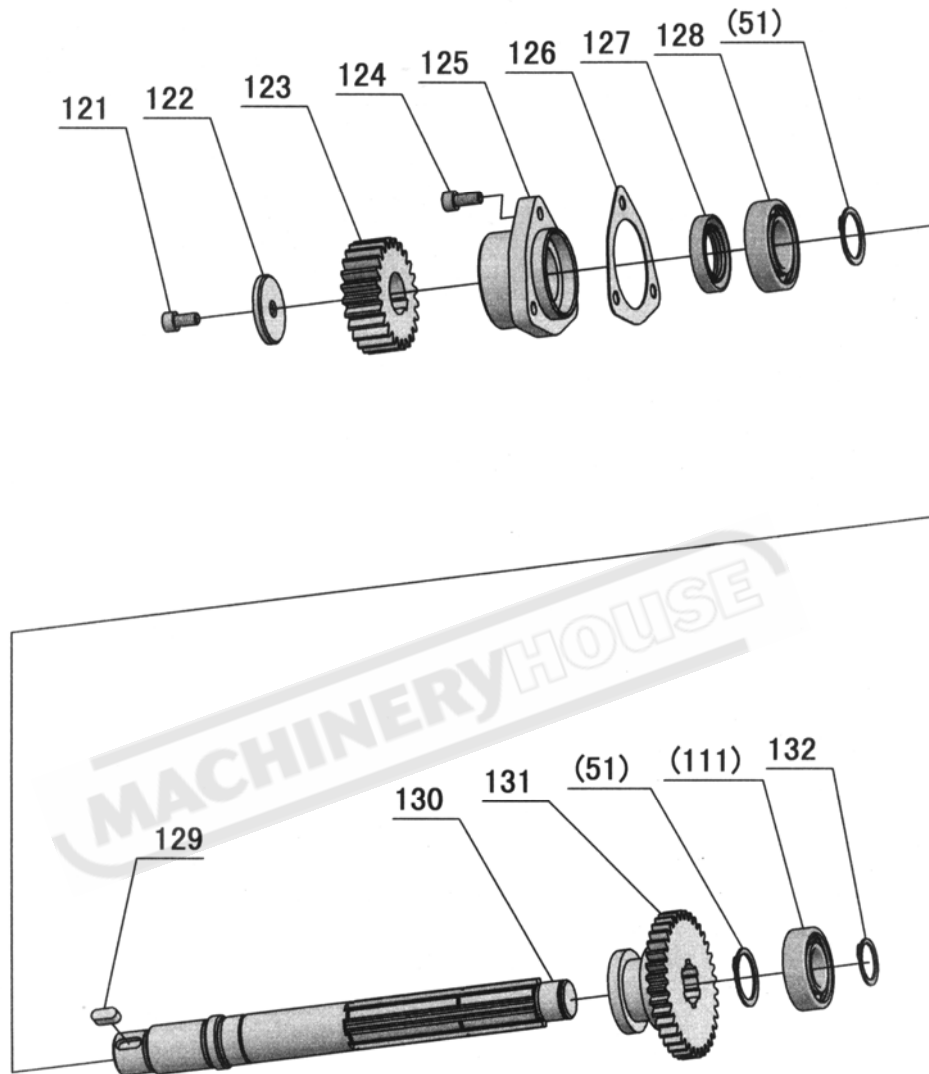




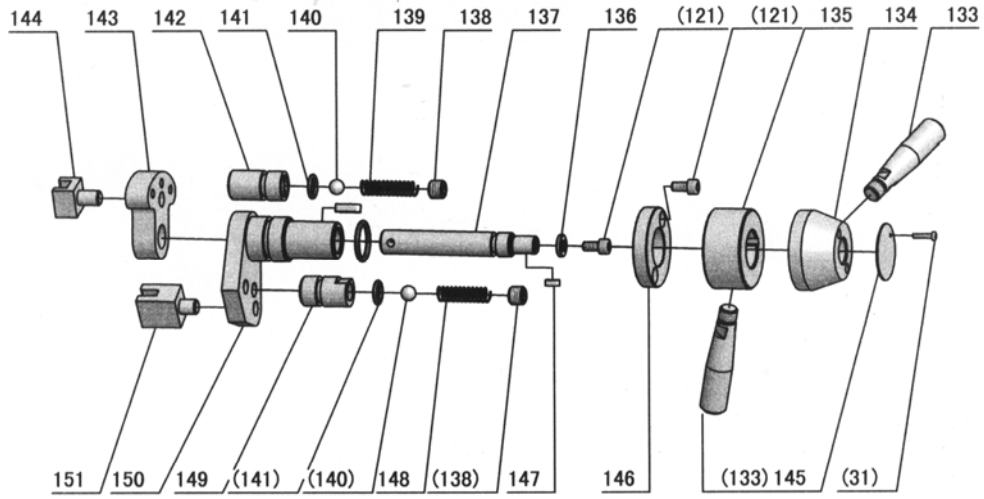




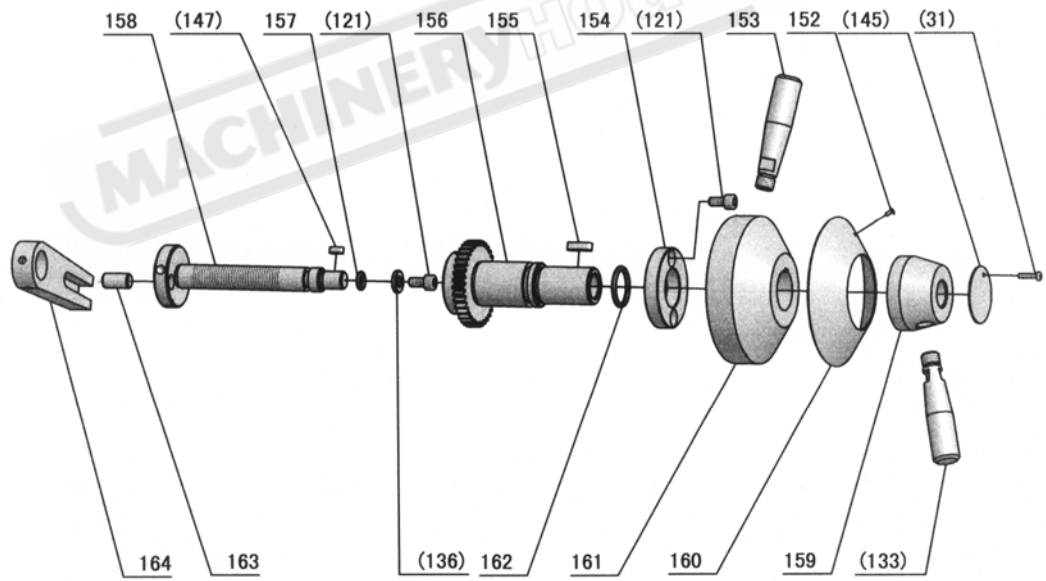
F



I



II



No.	Part No.	Name	Specification
1	GB70-85	Socket Head Cap Screw	M6×30
2	CL6132-04-06	Plug-Oil Inlet	
3	CD6236-04-19	Cover Dress	
4	CD6236/6240-04-15	Headstock Cover(360/410)	
5	CD6236/6240-04-14	Packing(360/410)	
6	GB879-85	Spring Pin	5×30
7	GB70-85	Socket Head Cap Screw	M5×16
8	CD6236-04-74	Bracket	
9	CL6132-04-03	Plug	
10	GB3452.1-82	O-Ring	14×2.65
11	CD6236-04-22	Fork	
12	CD6236-04-21	Lever	
13	CL6132-04-76	Fork	
14	CD6236-04-20	Shaft	
15	CD6236/6240-04-16	Headstock(360/410)	
16	Q/ZB285.3	Oil Plug	ZG 3/8"
17	GB70-85	Screw	M12×20
18	CD6236-04-73	Limited Bracket	
19	CL6132-04-82	Adjust Screw	
20	CL6132-04-40	Plug	
21	GB3452.1-82	O-Ring	19×2.65
22	CD6236-04-13	Plate	
23	GB1160.1-86	Oil Sight	16
24	GB80-85	Fix Screw	M6×10
25	CL6132-04-99	Sleeve	
26	GB77-85	Screw	M8×12
27	GB2089-80	Spring	1×5×22
28	GB308-84	Steel Ball	6.5
29	CD6236-04-18	Bracket	
30	CD6236-04-17	Gear	Mn=2.5 Z=43
31	GB818-85	Cross Recessed Head Screw	M3×15
32	GB812-88	Nut	M30×1.5
33	GB858-88	Toothed Lock Washer	30
34	CD6236-04-02	Belt Pulley	
35	RUN6246-101009	Spacer	
36		Oil Seal	TC55×42×9
37	GB70-85	Socket Head Cap Screw	M6×40
38	GB1235-76	O-Ring	36×3.5
39	RUN6246-101010	Bearing Cover	
40	RUN6246-101010-1	Packing	

No.	Part No.	Name	Specification
41	GB1096-79	Key	8×40
42	GB1096-79	Key	8×50
43	CD6236-04-01	Shaft	
44	GB278-89	Ball Bearing	80206
45	CD6236-04-03	Gear	Mn=2.5 Z=38
46	CD6236-04-04	Gear	Mn=2.5 Z=33
47	CD6236-04-05	Sleeve	
48	CD6236-04-06	Gear	Mn=2.5 Z=23
49	CD6236-04-07	Gear	Mn=2.5 Z=33
50	GB278-89	Ball Bearing	80205
51	GB894.1-86	External Circlip	25
52	CD6236-04-08	Plug	
53	GB70-85	Socket Head Cap Screw	M6×14
54	CD6236-04-68	Cover	
55	CD6236-04-67	Packing	
56	GB278-89	Ball Bearing	80305
57	CD6236-04-69	Spacer	
58	CD6236-04-09	Shaft	
59	GB894.1-86	External Circlip	65
60	CD6236-04-63	Gear	Mn=2.5 Z=39
61	CD6236-04-64	Gear	Mn=2.5 Z=54
62	CD6236-04-65	Gear	Mn=2.5 Z=47
63	GB1096-79	Key	8×60
64	CD6236-04-66	Gear	Mn=2.5 Z=31
65	GB894.1-86	External Circlip	30
66	GB276-89	Ball Bearing	E206
67	GB894.1-86	External Circlip	45
68	CD6236-04-10	Gear	Mn=2.5 Z=60
69	GB1096-79	Key	8×30
70	CD6236-04-11	Gear	Mn=2.5 Z=21
71	GB893.1-86	External Circlip	62
72	GB1235-76	O-Ring	56×3.5
73	CD6236-04-12	Cover	
74	CD6236-04-62	Balance Piece	
75	GB77-85	Fix Screw	M6×8
76	CD6236-04-61	Set Nut	
77	GB70-85	Socket Head Cap Screw	M6×25
78	GB77-85	Fix Screw	M6×10
79	CD6236-04-58	Cover	
80	CD6236-04-59	Packing	

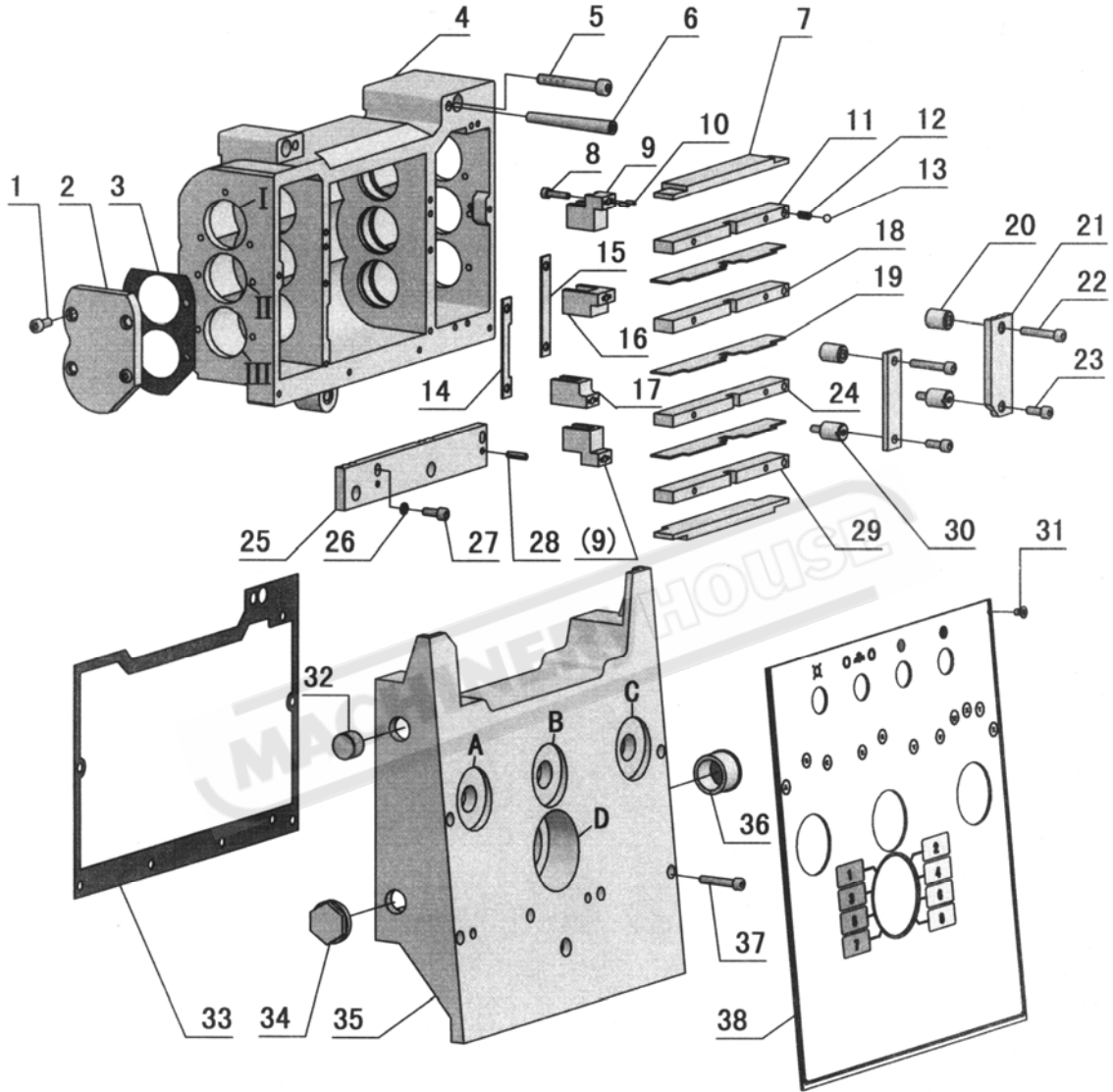
No.	Part No.	Name	Specification
81	CD6236-04-60	Cycle Oil Ring	
82	GB276-89	Ball Bearing	E213
83	CD6236-04-57	Sleeve	
84	CD6236-04-56	Gear	Mn=2 Z=48
85	CD6236-04-34	Fix Black	
86	CD6236-04-33	Set Nut	
87	GB297-84	Taper Roller	D2007114E
88	GB894.1-86	External Circlip	75
89	CD6236-04-35	Gear	Mn=2.5 Z=43
90	CD6236-04-36	Gear	Mn=2.5 Z=82
91	GB297-84	Taper Roller	D2007116E
92	CD6236-04-38	Packing	
93	CD6236-04-37	Cover	
94	GB70-85	Socket Head Cap Screw	M6×30
95	CD6236-04-39	Spindle	D1-6
96	RUN6246-101082-1	Spring	
97	RUN6246-101081	Cam Lock	
98	RUN6246-101082	Cam Lock Stud	
99	RUN6246-101087	Screw	
100	GB1235-76	O-Ring	28×3.1
101	CD6236-04-40	Shaft	
102	GB1096-79	Key	5×20
103	CD6236-04-43-1	Gear	Mn=2 Z=24
104	GB894.1-86	External Circlip	42
105	CD6236-04-43-2	Bush	
106	CD6236-04-44	Gear	Mn=2 Z=48
107	CD6236-04-42-2	Bush	
108	CD6236-04-42	Gear	Mn=2 Z=36
109	CD6236-04-41	Spacer	
110	GB894.1-86	External Circlip	22
111	GB278-89	Ball Bearing	80104
112	GB1096-79	Key	8×115
113	CD6236-04-45	Shaft	
114	CD6236-04-46	Gear	Mn=2 Z=26
115	CD6236-04-47	Sleeve	
116	CD6236-04-48	Gear	Mn=2 Z=24
117	CD6236-04-49	Gear	Mn=2 Z=48
118	GB278-89	Ball Bearing	80204
119	GB1235-76	O-Ring	46×3.5
120	CD6236-04-55	Cover	

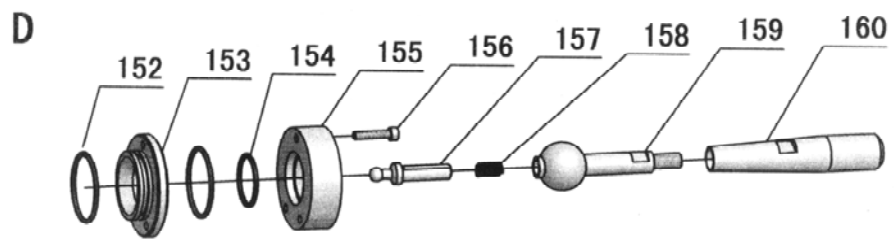
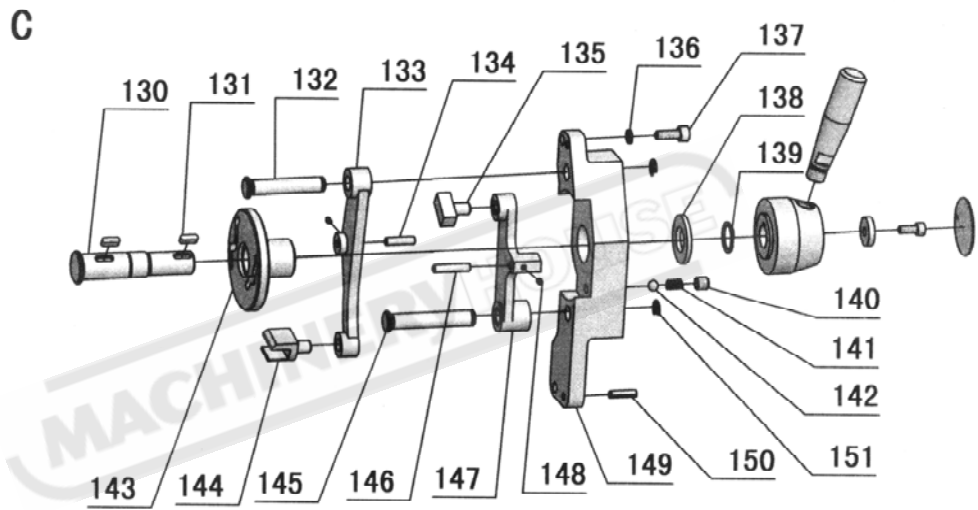
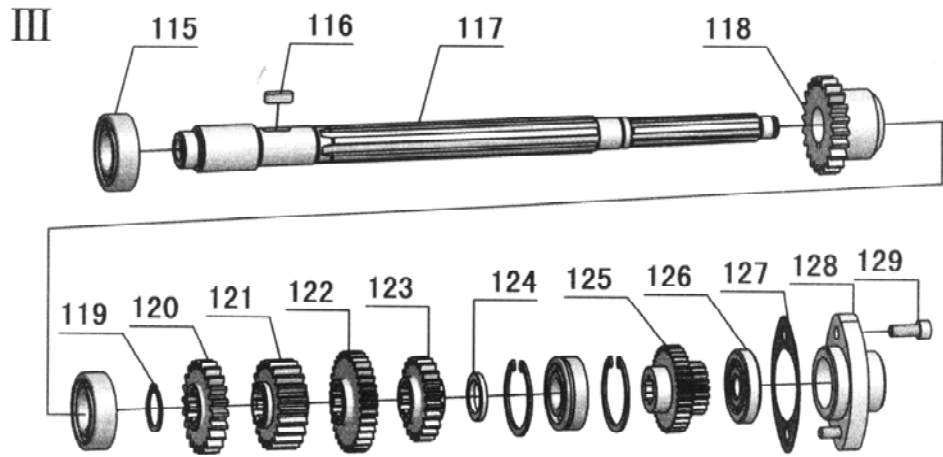
No.	Part No.	Name	Specification
121	GB70-85	Socket Head Cap Screw	M6×12
122	CD6236-04-54	Spacer	
123	CD6240-04-53	Change Gear(410)	Inch(24T)
124	GB70-85	Socket Head Cap Screw	M6×14
125	CD6236-04-52	Cover	
126	CD6236-04-52	Packing	
127	HG4-692-67	Oil Seal	SD25×40×10
128	GB278-89	Ball Bearing	80105
129	GB1096-79	Key	6×14
130	CD6236-04-50	Shaft	
131	CD6236-04-51	Gear	Mn=2 Z=36
132	GB894.1-86	External Circlip	20
133	CD6236-05-63A	Lever	
134	CD6236-04-28	Lever Head	
135	CD6236-04-27	Lever Head	
136	CL6132-04-62	External Circlip	
137	CD6236-04-29	Shaft	
138	GB77-85	Fix Screw	M12×10
139	GB2089-80	Spring	0.9×9×40
140	GB308-84	Steel Ball	φ10
141	GB3452.1-82	O-Ring	14×2.65
142	CD6236-04-31	Bracket	
143	CD6236-04-30	Lever	
144	CD6236-04-32	Fork	
145	CL6132-04-90	Plate	
146	CD6236-04-26	Cover	
147	GB1096-79	Key	4×10
148	GB2089-80	Spring	0.9×9×35
149	CD6236-04-25	Bracket	
150	CD6236-04-24	Lever	
151	CD6236-04-23	Fork	
152	GB827-86	Rivet	2×5
153	CD6236-04-78A	Lever	
154	CL6132-04-68	Cover	
155	GB1096-79	Key	5×18
156	CD6236-04-77	Gear Shaft	Mn=1.5 Z=37
157	GB3452.1-82	O-Ring	10×2.65
158	CD6236-04-75	Lever Shaft	
159	CL6132-04-91	Lever Bracket	
160	CL6132-04-92	Plate	

No.	Part No.	Name	Specification
161	CL6132-04-98	Lever Bracket	
162	GB1235-76	O-Ring	28×3.1
163	CL6132-04-94	Pin	
164	CD6236-04-76	Bracket	

MACHINERYHOUSE

19.Gear Box Control





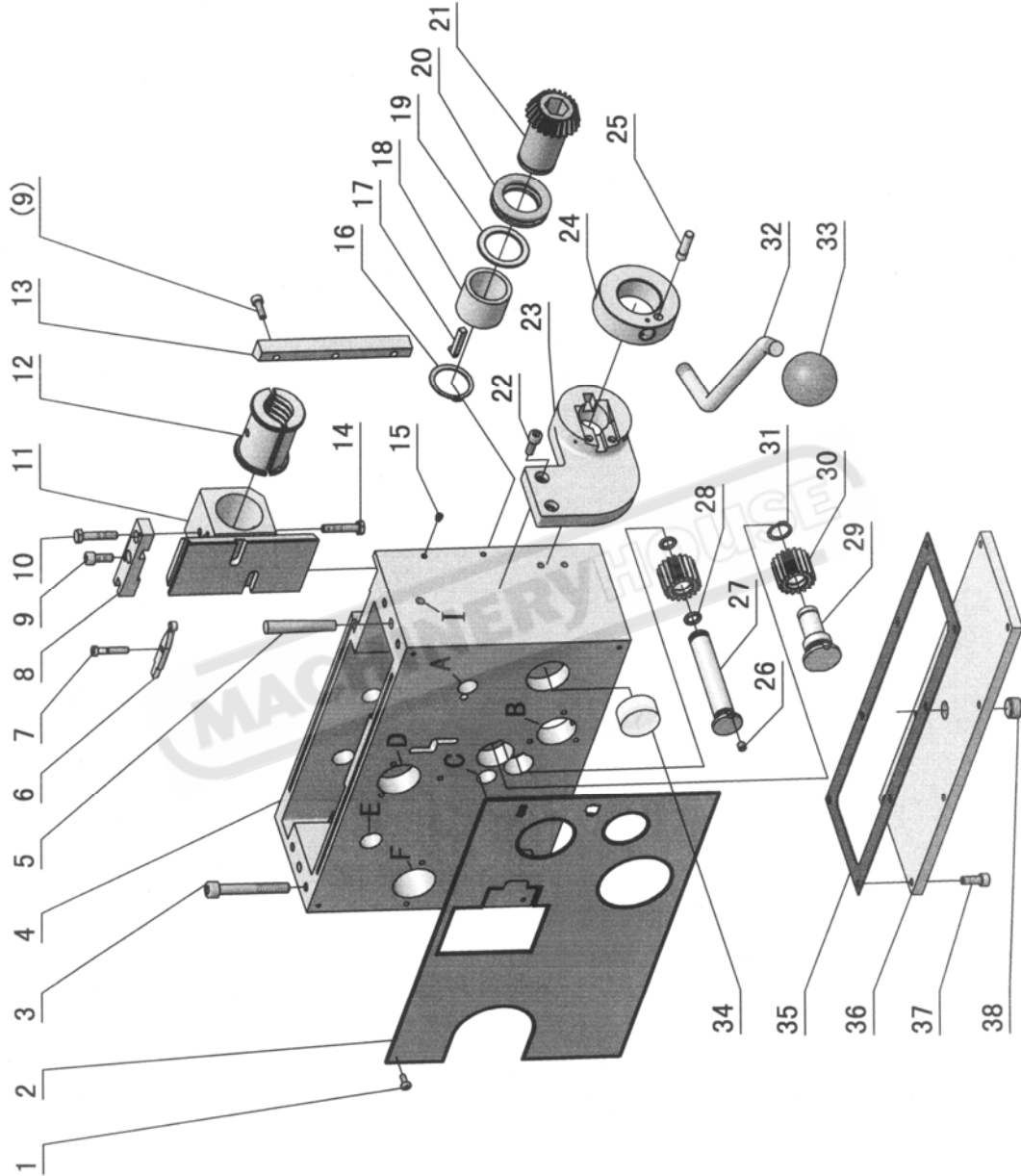
No.	Part No.	Name	Specification
1	GB70-85	Socket Head Cap Screw	M6×16
2	CD6236-05-91	Cover	
3	CD6236-05-65	Packing	
4	CD6236-05-42	Gear Box Casting	
5	GB70-85	Socket Head Cap Screw	M8×60
6	GB118-86	Taper Pin	A8×90
7	CD6236-05-58	Top Plate	
8	GB70-85	Socket Head Cap Screw	M5×20
9	CD6236-05-96	Fork	
10	GB879-86	Spring Pin	3×10
11	CD6236-05-56	Fork	
12	GB2089-80	Spring	0.8×5×17
13	GB308-84	Steel Ball	6
14	CD6236-05-92	Plate	
15	CD6236-05-97	Plate	
16	CD6236-05-95	Fork	
17	CD6236-05-94	Fork	
18	CD6236-05-55	Fork	
19	CD6236-05-57	Drive Plate	
20	CD6236-05-59	Sleeve	
21	CD6236-05-51	Set Screw	M6×5
22	GB70-85	Socket Head Cap Screw	M6×35
23	GB70-85	Socket Head Cap Screw	M6×16
24	CD6236-05-54	Fork	
25	CD6236-05-89	Selector Bar	
26	GB93-87	Spring Washer	6
27	GB70-85	Socket Head Cap Screw	M6×16
28	GB879-86	Spring Pin	5×18
29	CD6236-05-53	Fork	
30	CD6236-05-52	Screw	
31	GB819-85	Cross Screw	M5×8
32	GB3289.2-82	Oil Inlet Pip	ZG1/2"
33	CD6236-05-87	Packing	
34	GB3289.31-82	Plug	ZG1/2"
35	CD6236-05-48	Cover	
36	GB1160.1-89	Oil Sight Glass	20
37	GB70-85	Socket Head Cap Screw	M6×35
38	CD6236-05-62	Plate	
39	GB1096-79	Key	8×28
40	CD6236-05-01	Shaft	

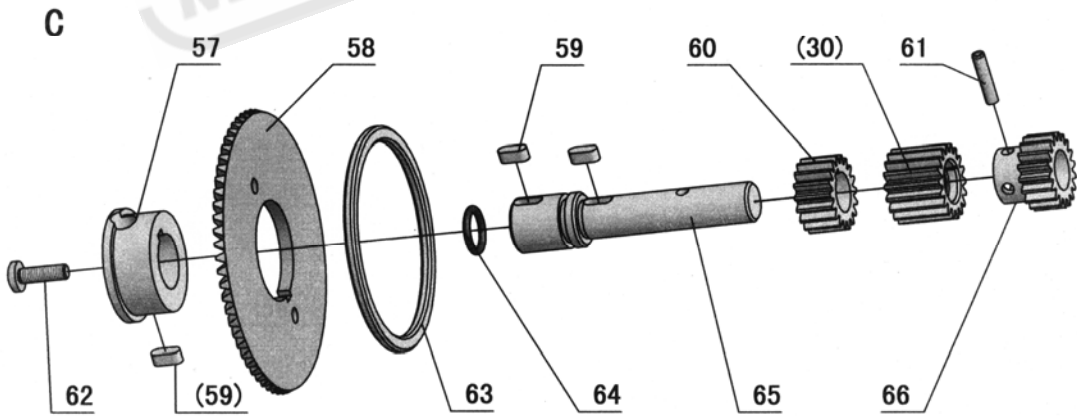
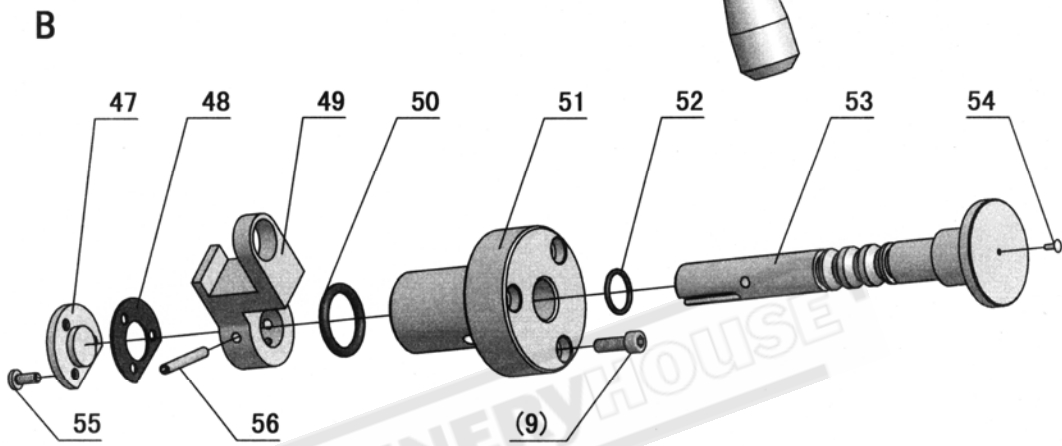
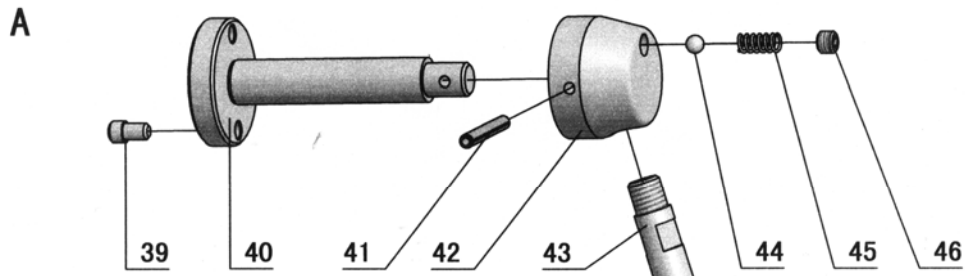
No.	Part No.	Name	Specification
41	HG4-692-67	Oil Seal	PD20×35×10
42	GB70-85	Socket Head Cap Screw	M6×16
43	CD6236-05-11	Bracket	
44	CD6236-05-64	Packing	
45	GB290-64	Roller Bearing	943/20
46	CD6236-05-12	Washer	
47	GB894.1-86	Circlip	20
48	CD6236-05-13	Gear	Mn=2.25 Z=39 Mn=1.75 Z=20
49	CD6236-05-14	Shaft	
50	GB1096-79	Key	5×8
51	GB276-84	Ball Bearing	7000104
52	CD6236-05-15	Gear	Mn=1.5 Z=38
53	CD6236-05-22	Gear	Mn=2. Z=23 Mn=1.5 Z=19
54	GB894.1-86	Circlip	20
55	CD6236-05-27	Washer	
56	GB893.1-86	Circlip	40
57	GB276-82	Ball Bearing	203
58	CD6236-05-28	Clutch	
59	CD6236-05-76	Washer	
60	GB894.1-86	Circlip	14
61	CD6236-05-29	Clutch Gear	
62	GB894.1-86	Circlip	20
63	CD6236-05-31	Washer	
64	CD6236-05-32	Packing	
65	CD6236-05-33	Cover	
66	GB70-85	Socket Head Cap Screw	M6×16
67	HG4-692-67	Oil Seal	PD20×35×10
68	CD6236-05-30	Shaft	
69	CD6236-05-40	Fork	
70	CD6236-05-88	Lever	
71	GB308-84	Steel Ball	φ6.5
72	GB2089-80	Spring	0.8×5×17
73	CD6236-05-90	Shaft	
74	GB1096-79	Key	4×12
75	CD6236-05-101	Sleeve	
76	GB3452.1-82	O-Ring	16×2.65
77	CD6236-05-63A	Lever	
78	CD6236-05-63	Lever	
79	CL6132-04-90	Plate	
80	GB77-85	Screw	M6×6

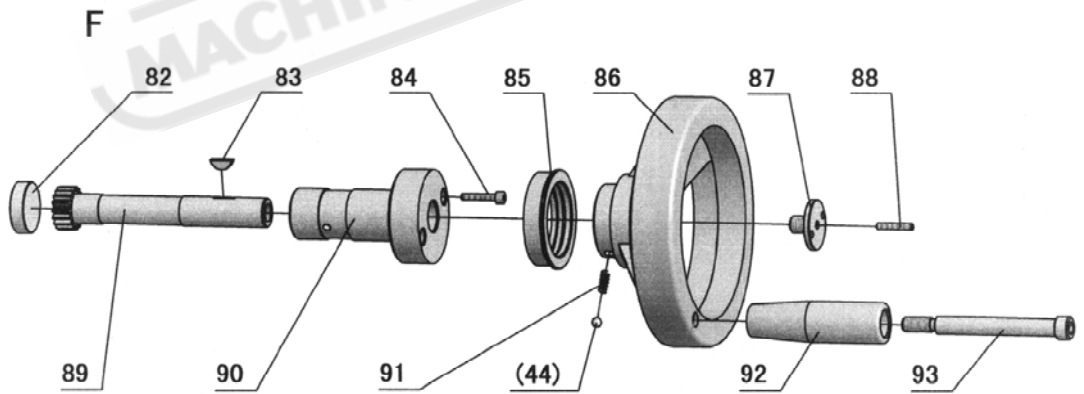
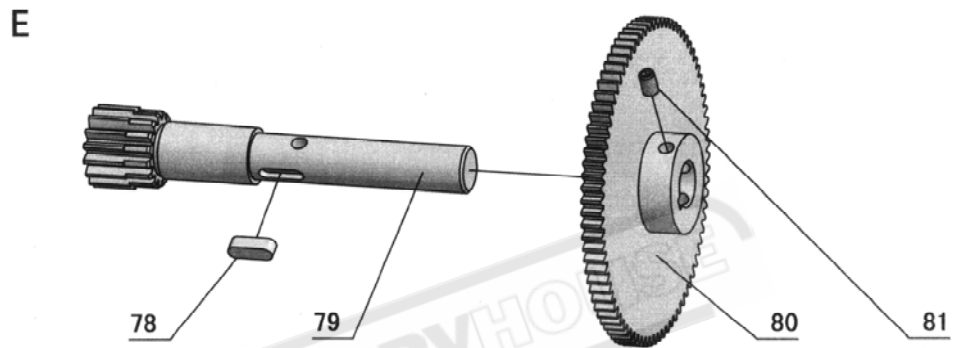
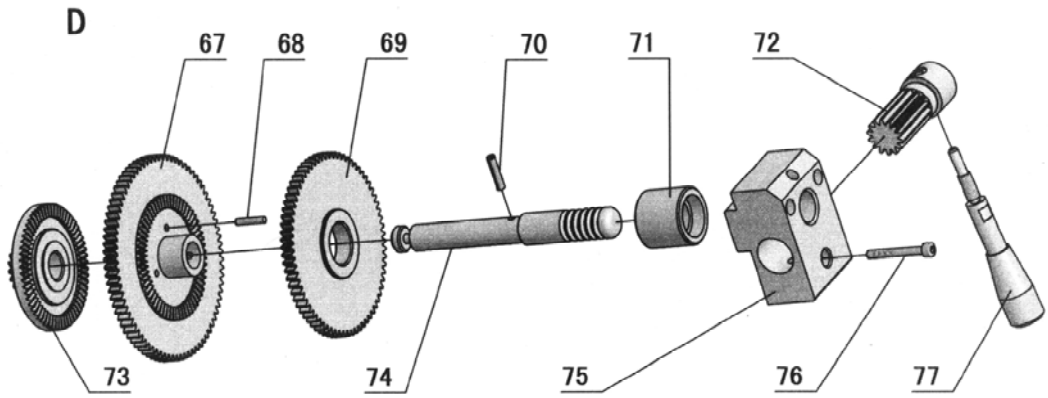
No.	Part No.	Name	Specification
81	GB879-86	Spring Pin	4×25
82	CD6236-05-100	Washer	
83	GB70-85	Socket Head Cap Screw	M5×12
84	GB276-84	Ball Bearing	7000104
85	CD6236-05-67	Shaft	
86	CD6236-05-66	Washer	
87	CD6236-05-68	Gear	Mn=1.75Z=30 Mn=2.25 Z=19
88	CD6236-05-69	Washer	
89	GB894.1-86	Circlip	25
90	GB276-84	Ball Bearing	7000104
91	CD6236-05-16	Gear	Mn=2 Z=22
92	CD6236-05-17	Gear	Mn=1.5 Z=19
93	CD6236-05-18	Gear	Mn=2. Z=20
94	CD6236-05-19	Gear	Mn=2 Z=24
95	CD6236-05-20	Gear	Mn=2 Z=23
96	CD6236-05-21	Gear	Mn=1.5 Z=27
97	CD6236-05-23	Gear	Mn=1.5 Z=24
98	CD6236-05-24	Gear	Mn=1.75 Z=28
99	CD6236-05-25	Gear	Mn=1.75 Z=26
100	CD6236-05-26	Gear	Mn=1.5 Z=38
101	CD6236-05-27	Washer	
102	GB276-82	Ball Bearing	203
103	CD6236-05-77	Nut	
104	CD6236-05-79	Gear	Mn=1.5 Z=33
105	CD6236-05-81	Bracket	
106	GB70-85	Socket Head Cap Screw	M6×16
107	GB1096-79	Key	5×35
108	GB893.1-86	Circlip	40
109	GB77-85	Screw	M5×8
110	GB894.1-86	Circlip	22
111	HG4-692-67	Oil Seal	PD25×40×10
112	GB301-84	Thrust Bearing	8105
113	CD6236-05-78	Shaft	
114	CD6236-05-41	Fork	
115	GB276-84	Ball Bearing	7000104
116	GB1096-79	Key	5×16
117	CD6236-05-71	Shaft	
118	CD6236-05-70	Gear	Mn=2.25 Z=22
119	GB894.1-86	Circlip	20
120	CD6236-05-72	Gear	Mn=2 Z=22

No.	Part No.	Name	Specification
121	CD6236-05-73	Gear	Mn=2 Z=22
122	CD6236-05-74	Gear	Mn=1.5 Z=33
123	CD6236-05-75	Gear	Mn=1.75 Z=22
124	CD6236-05-27	Washer	
125	CD6236-05-80	Gear	Mn=1.25Z=36 Mn=1.25 Z=20
126	GB276-86	Roller Bearing	101
127	CD6236-05-99	Packing	
128	CD6236-05-82	Bracket	
129	GB70-85	Socket Head Cap Screw	M6×16
130	CD6236-05-35	Lever	
131	GB1096-79	Key	4×12
132	CD6236-05-38-1	Shaft	
133	CD6236-05-84	Lever	
134	CD6236-05-43	Fork	
135	CD6236-05-39	Fork	
136	GB93-87	Spring Washer	6
137	GB70-85	Socket Head Cap Screw	M6×16
138	CD6236-05-83	Washer	
139	GB894.1-86	Circlip	17
140	GB77-85	Screw	M8×8
141	GB2089-80	Spring	0.8×5×17
142	GB308-84	Steel Ball	φ6.5
143	CD6236-05-36	Cam	
144	CD6236-05-86	Fork	
145	CD6236-05-38	Shaft	
146	CD6236-05-98	Fork	
147	CD6236-05-85	Lever	
148	GB879-86	Spring Pin	3×4
149	CD6236-05-37	Bracket	
150	GB879-86	Spring Pin	5×18
151	GB896-86	Circlip	8
152	GB3452.1-82	O-Ring	38.7×2.65
153	CD6236-05-50	Bracket	
154	GB3452.1-82	O-Ring	30×2.65
155	CD6236-05-49	Cover	
156	GB70-85	Socket Head Cap Screw	M5×25
157	CD6236-05-46	Selector	
158	GB2089-80	Spring	1×8×32
159	CD6236-05-44/01	Lever	
160	CD6236-05-44/02	Lever	

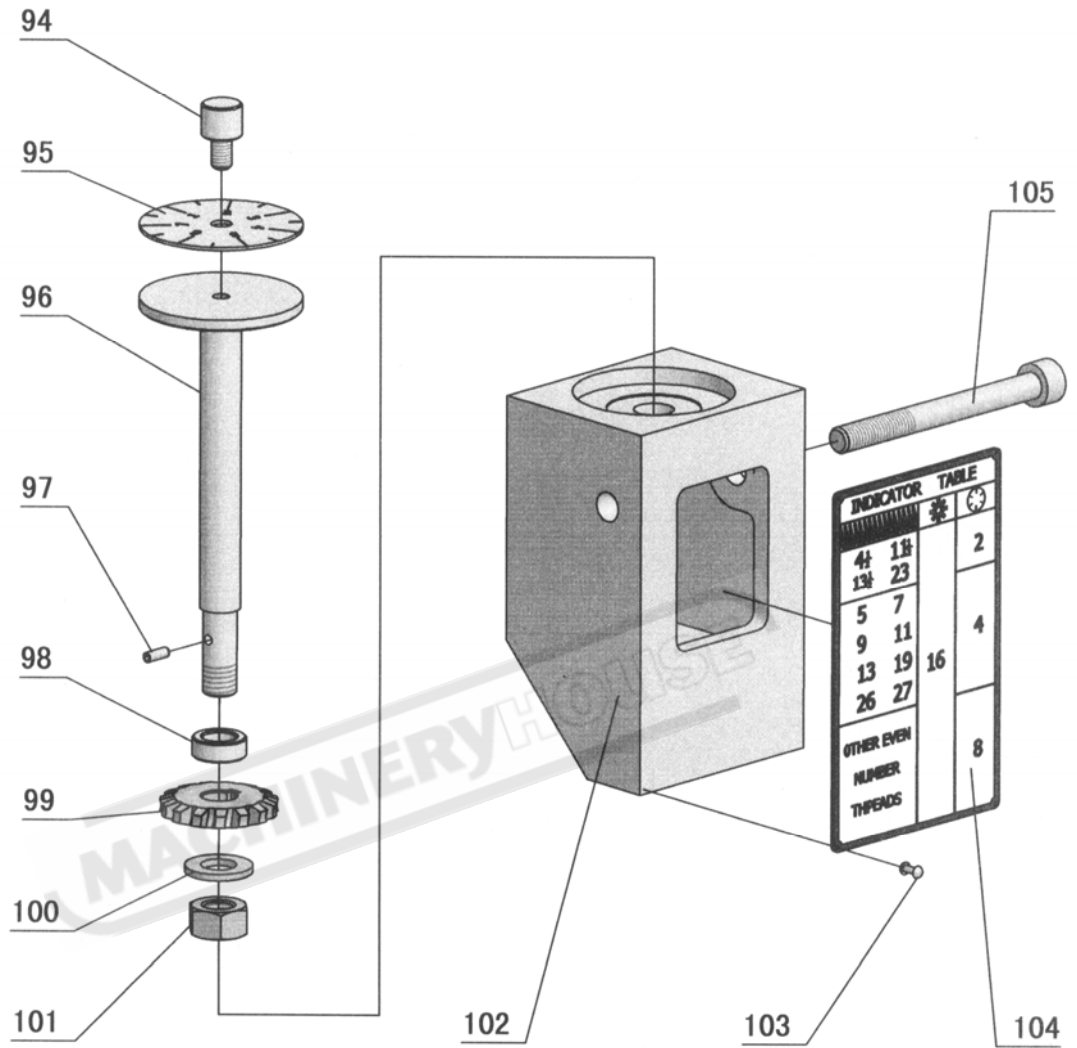
20. Apron







I

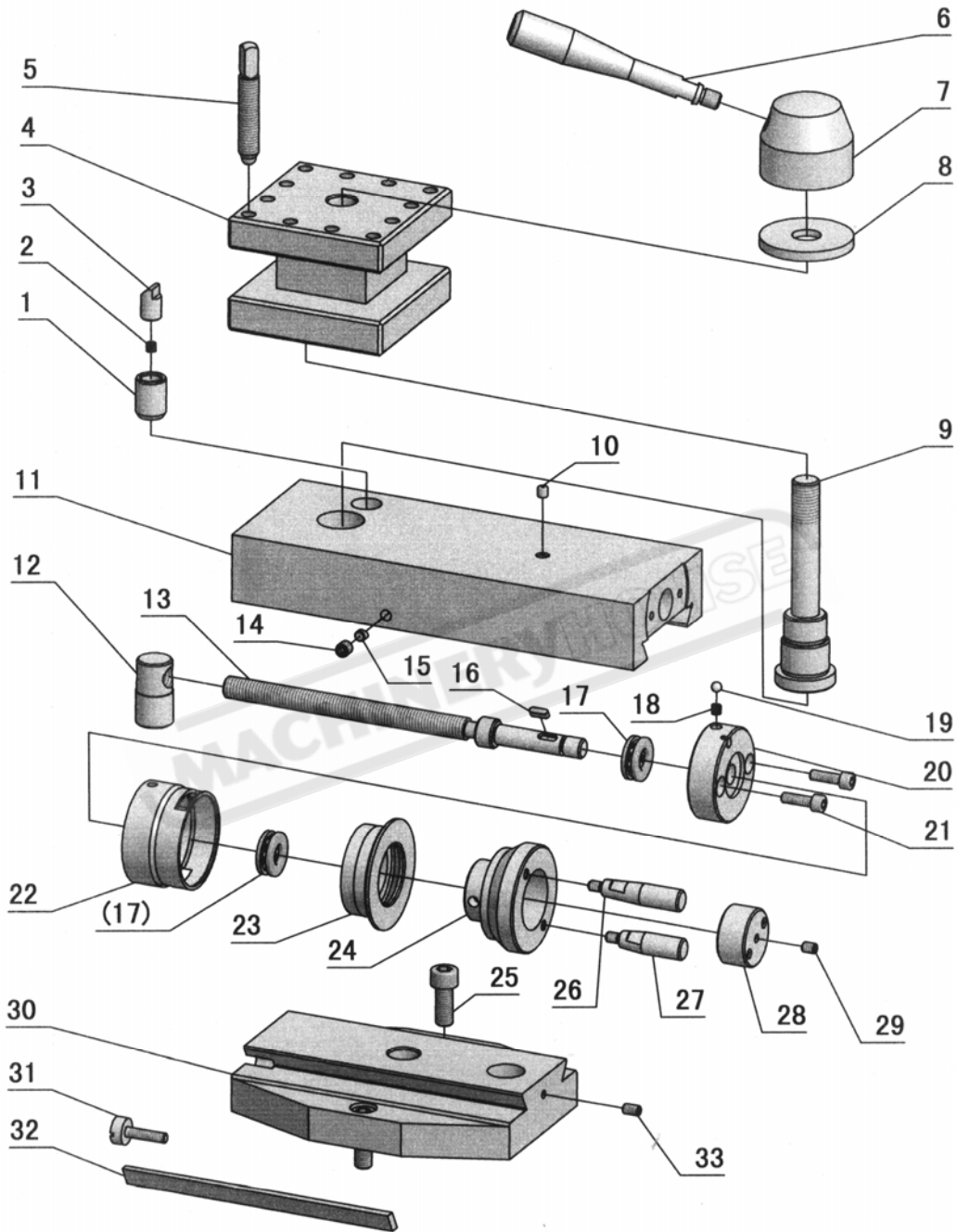


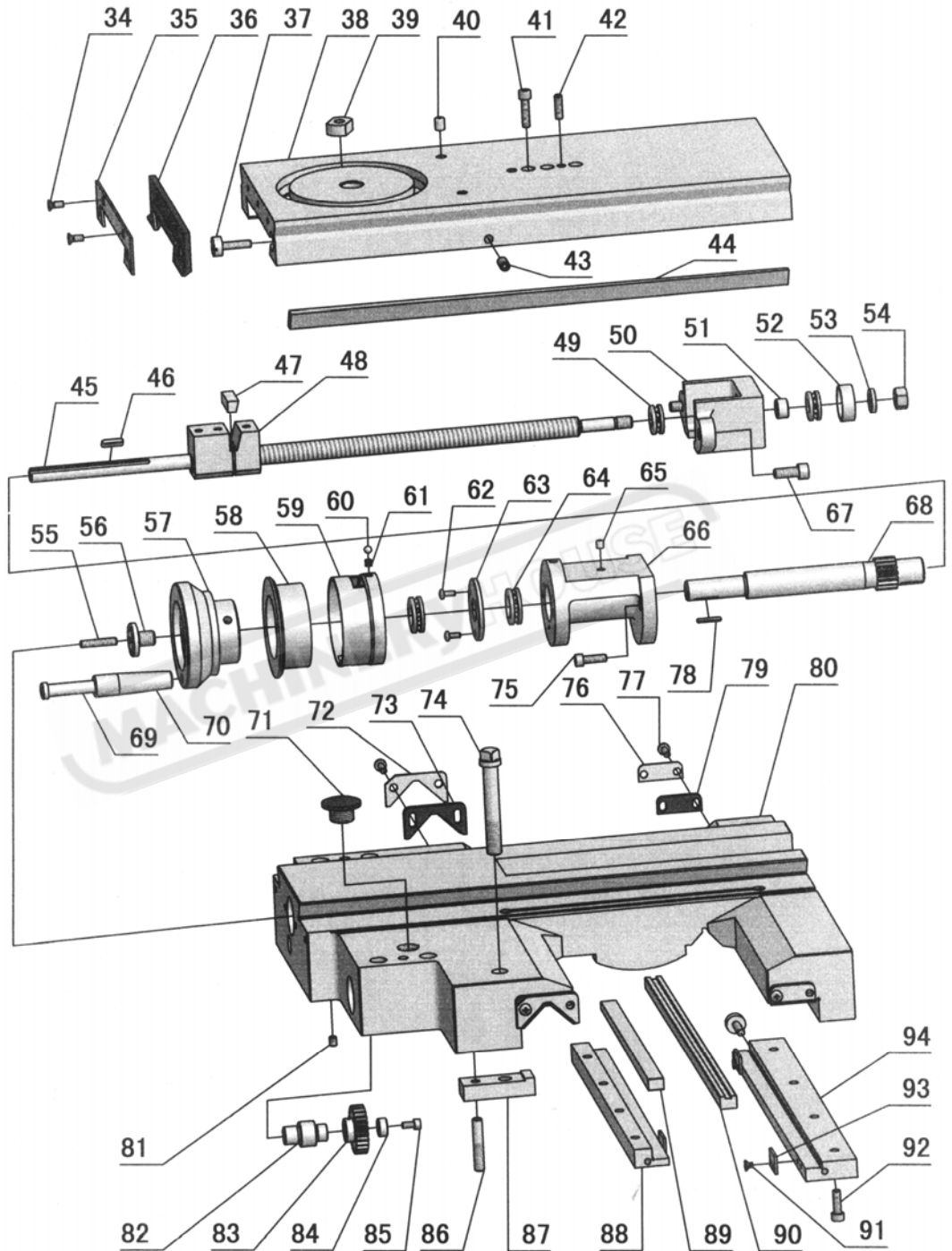
No.	Part No.	Name	Specification
1	GB818-85	Screw	M4×10
2	CD6236-06-03	Name Plate	
3	GB70-85	Socket Head Cap Screw	M8×60
4	CD6236-06-01	Apron Casting	
5	GB117-86	Pin	B8×60
6	CD6236-06-31	Lever	
7	CD6236-06-51	Bolt	
8	CD6236-06-39	Stopper	
9	GB70-85	Socket Head Cap Screw	M5×16
10	GB5782-86	Bolt	M6×12
11	CD6236-06-38	Half Bracket	
12	CD6236-06-52	Half Nut(Inch)	4TPI
13	CD6236-06-30	Gib	
14	GB5782-86	Bolt	M6×10
15	GB79-85	Socket Head Set Screw	M5×6
16	GB894.1-86	Clip	30
17	CD6236-06-35	Key	
18	GB290-82	Needle Bearing	7943/30
19	CD6236-06-28	Washer	
20	GB301-84	Thrust Bearing	8106
21	CD6236-06-29	Gear-Drive Level	Mn=1.75 Z=23
22	GB70-85	Socket Head Cap Screw	M6×16
23	RUN6246-106059	Switch Brackek	
24	RUN6246-106053	Bracket	
25	RUN6246-106055	Pin	
26	GB77-85	Socket Head Set Screw	M6×6
27	CD6236-06-44	Shaft	
28	GB3452.1-82	O-Ring	11.2×2.65
29	CD6236-06-19	Shaft	
30	CD6236-06-50	Gear	Mn=1.5 Z=18
31	GB894.1-86	External Circle	16
32	CD6236-06-33	Spindle Control Lever	
33	Z16-1	Lever Bush	
34	GB1160-86	Sight Glass	B20
35	CD6236-06-49	Packing	
36	CD6236-06-48	Bottom Plate	
37	GB70-85	Socket Head Cap Screw	M5×16
38	Q/ZB285.3	Oil Plug	R 3/8"
39	CD6236-06-37	Pin	
40	CD6236-06-25	Shaft	

No.	Part No.	Name	Specification
41	GB879-86	Spring Pin	5×42
42	CD6236-06-26	Lever Head	
43	CD6236-06-27	Handle	
44	GB308-84	Steel Ball	φ6.5
45	GB896-86	Clip	8
46	GB77-85	Socket Head Cap Screw	M8×6
47	CD6236-06-43	Cover	
48	CD6236-06-42	Packing	
49	CD6236-06-41	Fork	
50	GB3452.1-82	O-Ring	25.8×3.55
51	CD6236-06-22	Sleeve	
52	GB3452.1-82	O-Ring	16×1.8
53	CD6236-06-21	Shaft	
54	GB827-86	Rivet	2×6
55	GB818-85	Screw	M4×10
56	GB879-86	Spring Pin	4×30
57	CD6236-06-18-02	Input Bush	
58	CD6236-06-45	Gear-Drive Bevel	Mn=1.75 Z=64
59	GB1096-79	Key	5×12
60	CD6236-06-47	Gear	Mn=1.5 Z=18
61	GB879-86	Spring Pin	5×22
62	GB818-85	Screw	M6×20
63	CD6236-06-46	Washer	
64	GB3452.1-82	O-Ring	11.2×2.65
65	CD6236-06-18-01	Shaft	
66	CD6236-06-17	Gear	Mn=1.5 Z=18
67	CD6236-06-11	Gear	Mn=1.5Z=80 Mn=1.25 Z=60
68	GB119-86	Pin	D4×20
69	CD6236-06-12	Gear	Mn=1.5Z=72 Mn=1.25 Z=60
70	GB879-86	Spring Pin	5×22
71	CD6236-06-15	Sleeve	
72	CD6236-06-40	Gear Shaft	Mn=1.5 Z=14
73	CD6236-06-34	Gear	Mn=1.5Z=18 Mn=1.25 Z=60
74	CD6236-06-13	Shaft	
75	CD6236-06-14	Lever Head	
76	GB70-85	Socket Head Cap Screw	M5×40
77	CD6236-06-16	Lever	
78	GB1096-79	Key	6×18
79	CD6236-06-10	Shaft	Mn=1.75 Z=16
80	CD6236-06-09	Gear	Mn=1.5 Z=81

No.	Part No.	Name	Specification
81	GB78-85	Screw	M6×10
82	CD6236-06-23	Plug	
83	GB1099-79	Wood ruff Key	5×6.5×16
84	GB70-85	Socket Head Cap Screw	M5×25
85	CD6236-06-08	Dial	
86	CD6236-06-07	Hand Wheel	
87	CD6236-08-16	Screw Plug	
88	GB79-85	Set Screw	M5×25
89	CD6236-06-02	Shaft	
90	CD6236-06-04	Sleeve	
91	GB2089-80	Spring	
92	CD6236-06-05	Handle	
93	CD6236-06-06	Bolt	
94	CD6236-06-32 1/9	Screw	
95	CD6236-06-32-3G	Plate	
96	CD6236-06-32-1G	Shaft	
97	GB879-86	Spring Pin	3×8
98	CD6236-06-32-2G	Washer	
99	CD6236-06-32 2/5G	Worm Gear	Mn=2 Z=14
100	GB93-86	Spring Washer	10
101	GB6170-86	Nut	M10
102	CD6236-06-32G	Worm Unit	
103	GB827-86	Rivet	2×5
104	CD6236-06-32 5/5G	Plate	

21. Saddle



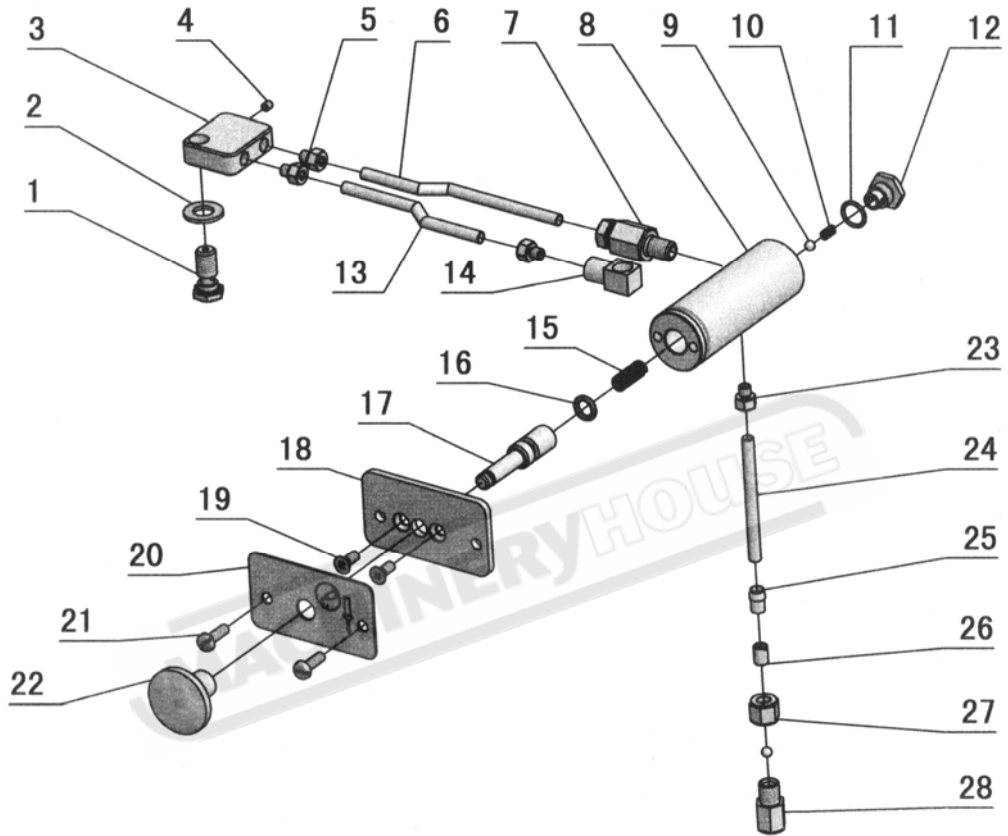


No.	Part No.	Name	Specification
1	CD6236-07-49A	Bush(S-Post)	
1	CD6236-07-49	Bush(T-Post)	
2	GB2089-80	Spring	0.5×5×18
3	CD6236-07-50	Pin	
4	CD6236-07-21	Tool Post	
5	GB98-83	Screw	M10×50
6	CD6236-07-29	Clamp Handle	
7	CD6236-07-19	Clamping Handle	
8	CD6236-07-20	Washer	
9	CD6236-07-18A	Tool Post Shaft(S-Post)	
9	CD6236-07-18	Tool Post Shaft(T-Post)	
10	GB1155-79	Ball Cup	6
11	CD6236-07-25A	Compound Rest(360S-Post)	
11	CD6240-07-25A	Compound Rest(410S-Post)	
11	CD6236-07-25	Compound Rest(360T-Post)	
11	CD6240-07-25	Compound Rest(410T-Post)	
12	CD6236-07-17G	Nut(Metric)	
12	CD6236-07-17	Nut(Inch)	
13	CD6236-07-07G	Feed Screw(Metric)	
13	CD6236-07-07	Feed Screw(Inch)	
14	GB77-85	Screw	M8×8
15	CD6236-07-46	Bottom	
16	GB1096-79	Key	4×12
17	GB301-84	Thrust Bearing	8101
18	GB2089-80	Spring	0.5×5×18
19	GB308-77	Steel Ball	6
20	CD6236-07-13	Seat	
21	GB70-85	Screw	M6×20
22	CD6236-07-12G	Steel Ball(Metric)	
22	CD6236-07-12	Steel Ball(Inch)	
23	CD6236-07-11G	Dial-Compound Rest(M)	
23	CD6236-07-11	Dial-Compound Rest(Inch)	
24	CD6236-07-10	Handle	
25	GB70-85	Screw	M10×25
26	CD6236-07-05	Handle	
27	CD6236-07-06	Handle	
28	CD6236-07-08	Screw Plug	
29	GB77-85	Screw	M6×8
30	CD6236-07-26	Swivel Table(360)	
30	CD6240-07-26	Swivel Table(410)	

No.	Part No.	Name	Specification
31	CD6236-07-48	Screw	
32	CD6236-07-47	Gib	
33	GB77-85	Screw	M6×10
34	GB819-85	Screw	M5×12
35	CD6236-07-44	Wiper Cover	
36	CD6236-07-45	Wiper	
37	CD6236-07-48	Screw	
38	CD6236-07-27	Cover-Cross Sliding	
39	CD6236-07-64	T-Bracket	
40	GB1155-79	Ball Cup	8
41	GB70-85	Screw	M6×25
42	GB77-85	Screw	M6×20
43	GB77-85	Screw	M8×16
44	CD6236-07-23	Gib	
45	CD6236-07-55G	Feed Screw(Metric)	
45	CD6236-07-55	Feed Screw(Inch)	
46	CD6240-07-63a-2	Key	4×18
47	RUN6246-103004	Bracket	
48	CD6236-07-51Ga	Nut(Metric)	
48	CD6236-07-51a	Nut(Inch)	
49	GB301-84	Thrust Bearing	8100
50	CD6236-07-22	Bracket	
51	CD6236-07-14	Spacer	
52	CD6236-07-30	Bearing Cover	
53	CD6236-07-09	Bracket	
54	GB6175-86	Clamping Nut	M10
55	GB77-85	Screw	M6×35
56	CD6236-07-37	Clamping Screw	
57	CD6236-07-38	Wheel;	
58	CD6236-07-41G	Dial-Feed(Metric)	
58	CD6236-07-41	Dial-Feed(Inch)	
59	CD6236-07-42G	Handle Spacer(Metric)	
59	CD6236-07-42	Handle Spacer(Inch)	
60	GB308-77	Steel Ball	6
61	GB2089-80	Spring	0.5×5×18
62	GB818-85	Screw	M4×10
63	CD6236-07-43	Washer	
64	GB301-84	Thrust Bearing	8103
65	GB1155-79	Ball Cup	6
66	CD6236-07-36	Bracket	

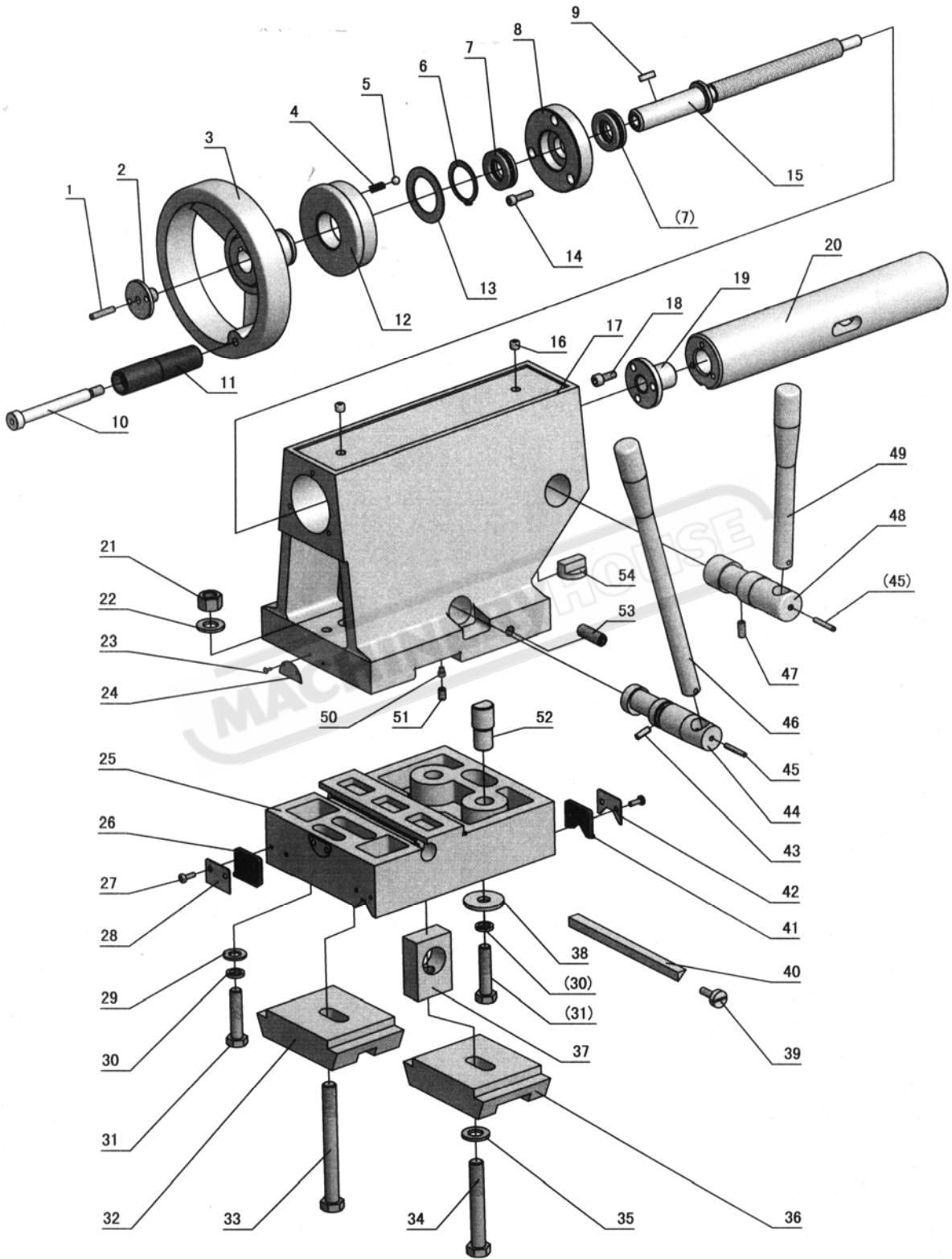
No.	Part No.	Name	Specification
67	GB77-85	Screw	M8×20
68	CD6240-07-63a	Gear Shaft	Mn=1.5 Z=16
69	CD6236-07-40	Screw	
70	CD6236-07-39	Handle Spacer	
71	CD6236-07-15	Plug	
72	CD6236-07-34	Wiper Cover	
73	CD6236-07-33	Wiper	
74	CD6236-07-04	Clamp Screw	
75	GB70-85	Screw	M6×20
76	CD6236-07-32	Wiper Cover	
77	GB818-85	Screw	M5×16
78	GB1096-86	Key	3×3×20
79	CD6236-07-31	Wiper	
80	CD6236-07-28	Carriage	
81	GB77-85	Screw	M6×8
82	CD6236-07-61	Shaft	
83	CD6236-07-60	Gear	Mn=1.5 Z=25
84	CD6236-07-59	Washer	
85	GB70-85	Screw	M5×10
86	CD6236-07-03	Support Screw	
87	CD6236-07-02	Clamp Block	
88	CD6236-07-16	Gib	
89	CD6236-07-58	Gib	
90	CD6236-07-57	Gib	
91	GB68-85	Screw	M4×6
92	GB70-85	Screw	M6×20
93	CD6236-07-16-1	Baffle	
94	CD6236-07-56	Gib	

22. Lubrication



No.	Part No.	Name	Specification
1	CD6236-07-01 13/13	Proper Screw	
2	GB97.1-85	Washer	10
3	CD6236-07-01 10/13	Distributor	
4	GB77-85	Screw	M4×5
5	15326C	Tie-in	
6		Lubrication Tube	φ5
7	2143SC	Tie-in	φ5/Z1/8
8	CD6236-07-01 6/13a	Pump	
9	GB308-77	Ball	5
10	GB2089-80	Spring	0.5×4×15
11	GB3452.1-82	O-Ring	11.2×1.8
12	CD6236-07-01 5/13	Plug	
13		Lubrication Tube	φ5
14	CD6236-07-01 7/13	Joint	
15	GB2089-80	Spring	1×7×45
16	GB3452.1-82	O-Ring	8×2.65
17	CD6236-07-01 2/13	Piston	
18	CD6236-07-01 4/13	Plate	
19	GB819-85	Screw	M5×12
20	CD6236-07-01 3/13	Name Plate	
21	GB67-85	Screw	M5×15
22	RUN6241-103067	Knob	
23	22587T	Tie-in	φ6/Z1/8
24		Lubrication Tube	φ6×150
25	RUN6246-103071	Tie-in	
26	RUN6246-103072	Nut	
27	B1061C	Double Taper Sheath	4
28	RUN6246-103073	Valve	

23. Tailstock Assembly

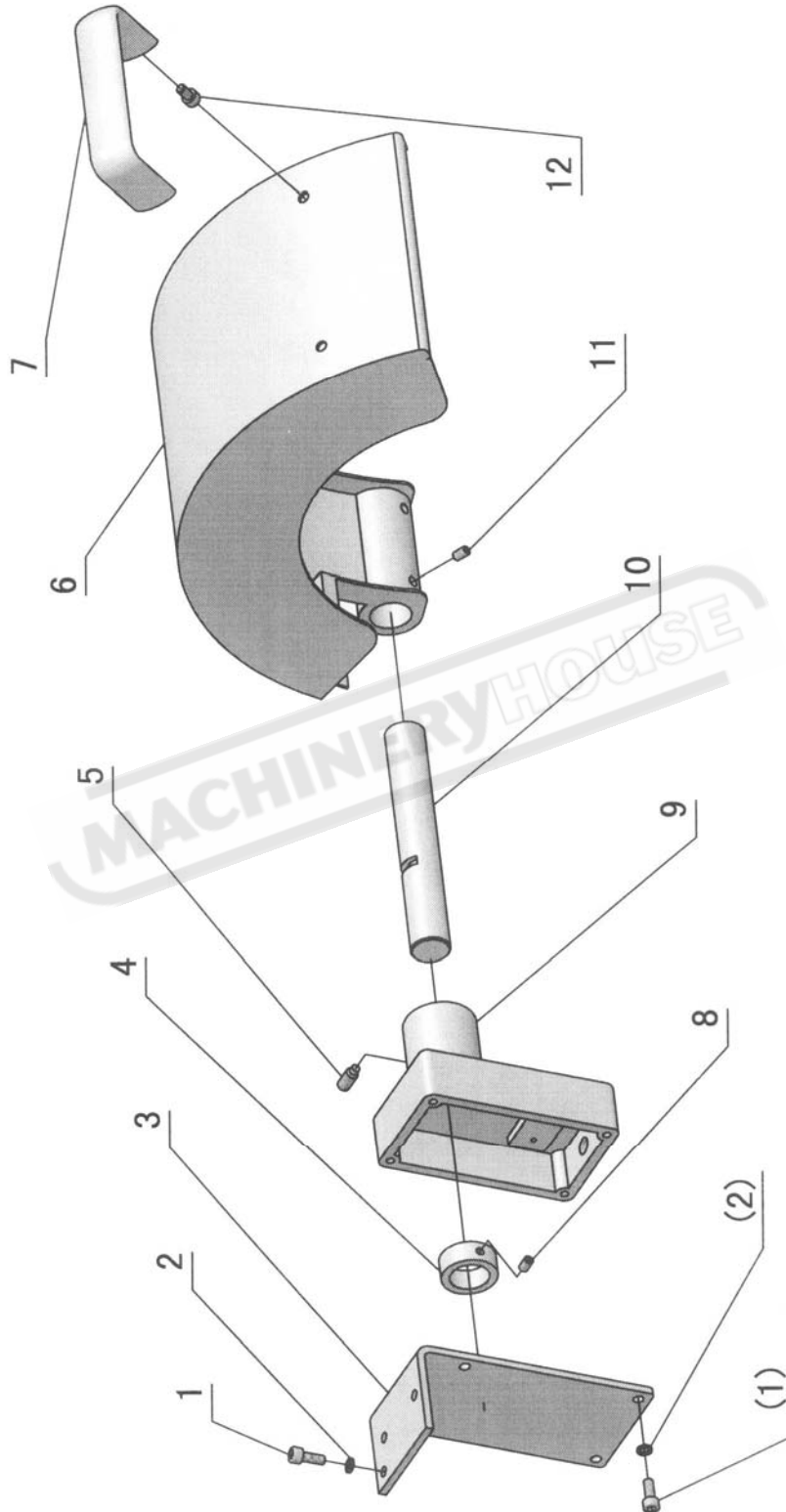


No.	Part No.	Name	Specification
1	GB78-85	Key	5×25
2	CD6236-08-16	Screw Plug	
3	CD6236-08-17	Hand Wheel	
4	GB2089-80	Spring	0.6×5×16
5	GB308-84	Steel Ball	Φ6.5
6	GB894.1-86	Retaining Ring	32
7	GB301-84	Thrust Bearing	8104
8	CD6236-08-13	Bracket	
9	GB1096-79	Key	5×16
10	CD6236-08-18	Bolt	
11	CD6236-08-19	Handle	
12	CD6236-08-14	Dial	
13	CD6236-08-15	Retaining Ring	
14	GB70-85	Screw	M5×25
15	CD6236-08-11	Feed Screw	
16	GB1155-79	Oil Cup	8
17	CD6236-08-01	Tailstock	
18	GB70-85	Screw	M6×16
19	CD6236-08-12	Feed Nut	
20	CD6236-08-10	Quill	
21	GB55-76	Hexagon Thick Nut	M12
22	GB97-85	Washer	12
23	GB827-85	Button Head Rivet	2×8
24	CD6236-08-26	Set-Over Indication Chart	
25	CD6236-08-05	Tail Stock Base	
26	CD6236-08-25	Bedway Wiper	
27	GB818-85	Cross Screw	M4×10
28	CD6236-08-27	Bedway Wiper Plate	
29	GB97.1-86	Washer	10
30	GB93-85	Spring Washer	10
31	GB5780-86	Bolt	M10×45
32	CD6236-08-29	Clamping Block	
33	GB5780-86	Bolt	M12×110
34	GB5780-86	Bolt	M12×80
35	GB95-86	Washer	12
36	CD6236-08-06	Clamping Block	
37	CD6236-08-20	Adjusting Block	
38	CD6236-08-30	Washer	
39	CD6236-08-04	Screw	
40	CD6236-08-03	Gib	

No.	Part No.	Name	Specification
41	CD6236-08-02	Bedway Wiper	
42	CD6236-08-28	Bedway Wiper Plate	
43	GB879-86	Spring Pin	5×15
44	CD6236-08-21	socket wrench	
45	GB879-86	Spring Pin	4×25
46	CD6236-08-22	Clamping Lever	
47	GB77-85	Socket Head Set Screw	M6×15
48	CD6236-08-23	Clamping Shaft	
49	CD6236-08-24	Clamping Lever	
50	GB79-85	Socket Head Set Screw	M6×10
51	GB77-85	Socket Head Set Screw	M6×10
52	CD6236-08-07	Shaft	
53	GB77-85	Socket Head Set Screw	M10×35
54	CD6236-08-09	Key	

MACHINERYHOUSE

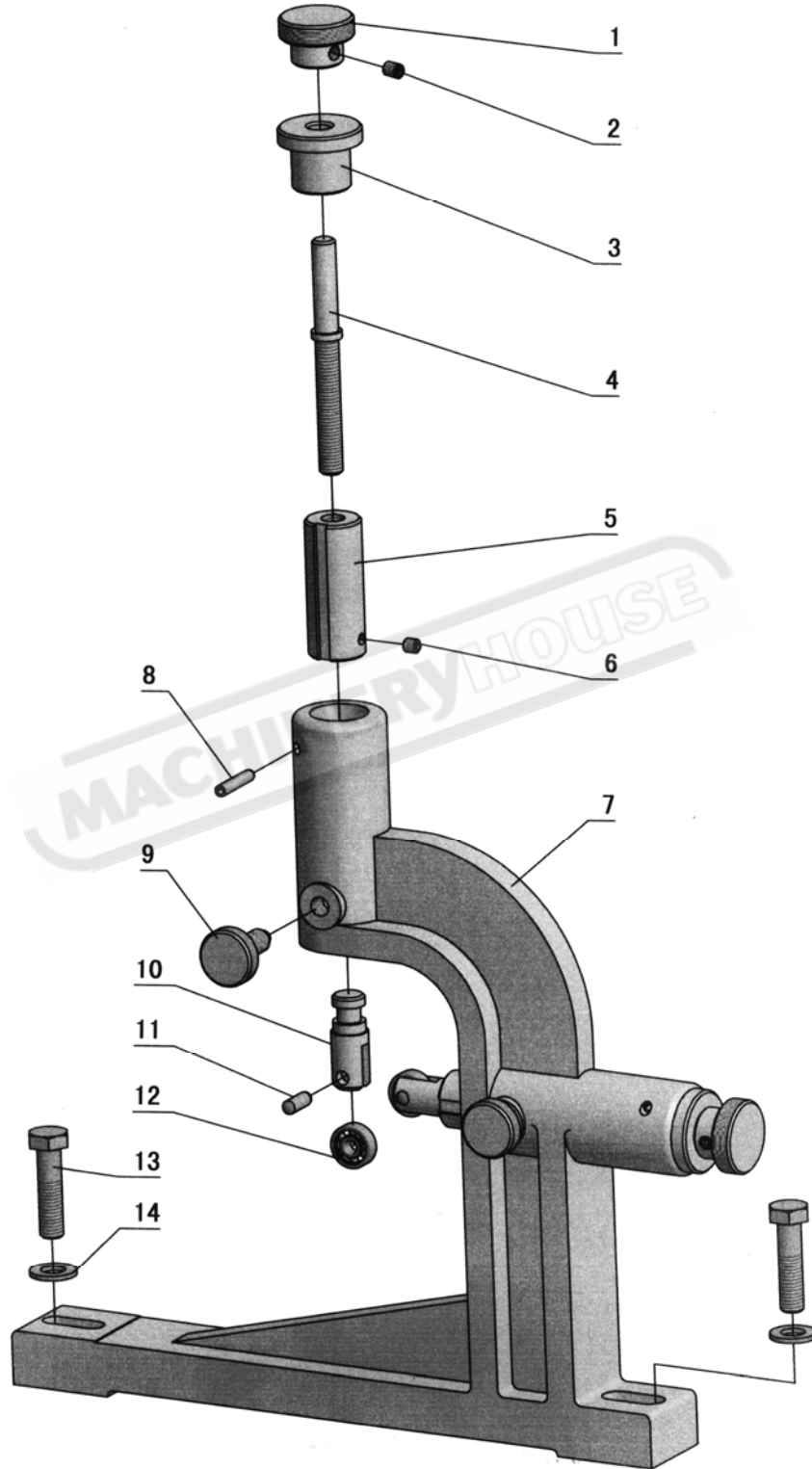
24. Chuck Guard Cover



No.	Part No.	Name	Specification
1	GB70-85	Screw	M6×12
2	GB93-86	Washer	6
3	CD6236-04F-02	Support Bracket	
4	CM6233-F1005	Sleeve	
5	GB75-85	Screw	M8X20
6	CD6236-04FA-01	Cover	
7	HY8315.4 A=114	handle	
8	GB78-85	Screw	M6×10
9	RIN6236-101101	Cover Bracket	
10	CD6236-04FA-04	Shaft	
11	GB78-85	Screw	M8×10
12	GB70-85	Screw	M6×10

MACHINERYHOUSE

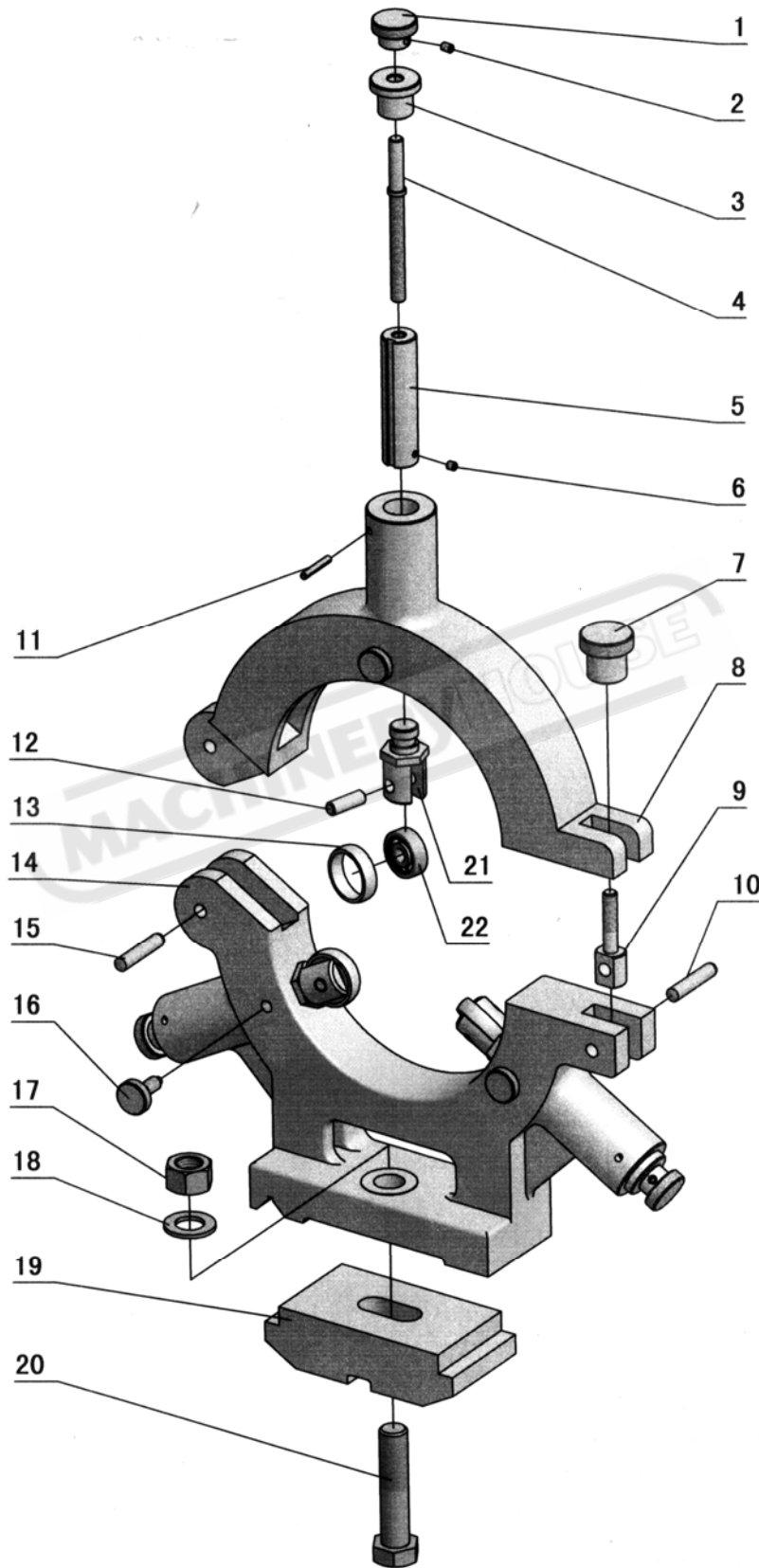
25. Follow Rest



No.	Part No.	Name	Specification
1	RUN6246-110019	Rotate Handle	
2	GB78-85	Screw	M6×8
3	RUN6246-110004	Bush	
4	CD6236-10-11	Screw Shaft	
5	CD6236-10-10	Sleeve	
6	GB77-85	Screw	M6×6
7	CD6236-10-09	Follow Rest	
8	GB879-86	Spring Pin	5×26
9	RUN6246-110018	Limited Screw	
10	CD6236-10-08	Support Shaft	
11	GB119-86	Pin	6×16
12	GB278-88	Bearing	80026
13	GB5782-86	Bolt	M10×40
14	GB97.1-86	Washer	6×16

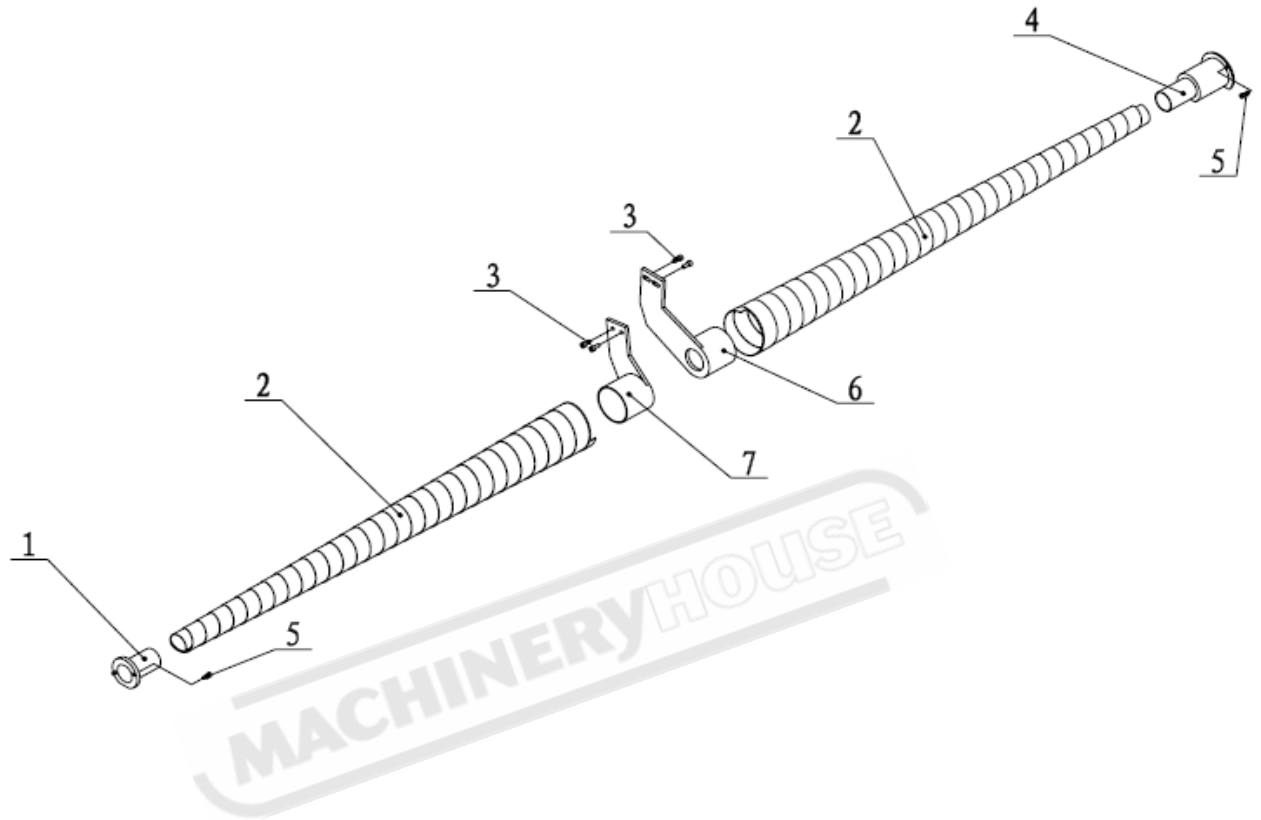
MACHINERYHOUSE

26. Steady Rest



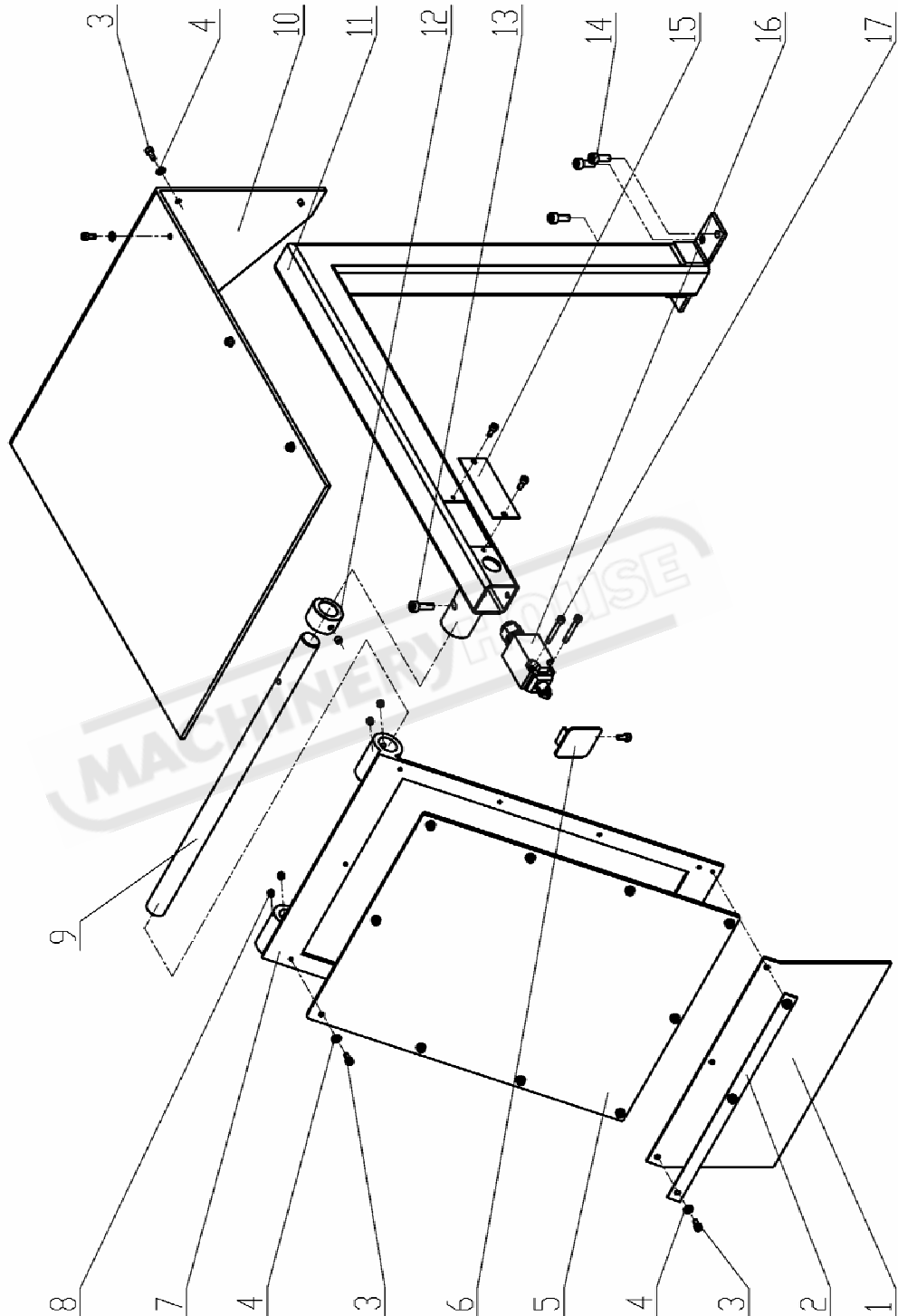
No.	Part No.	Name	Specification
1	RUN6246-110019	Rotate Handle	
2	GB78-85	Screw	M6×8
3	RUN6246-110004	Bush	
4	CD6240-10-05	Screw Shaft	
5	CD6236-10-04	Sleeve	
6	GB77-85	Screw	M6×6
7	RUN6246-110014	Handle	
8	CD6236-10-02	Upside of Steady Rest	
9	RUN6246-110013	Clamping Screw	
10	GB119-86	Pin	10×50
11	GB879-86	Spring Pin	5×32
12	GB119-86	Pin	6×20
13	CD6240-10-07	Guard Bush	
14	CD6236-10-01	Downside of Steady Rest	
15	GB119-86	Pin	10×50
16	RUN6246-110018	Limited Screw	
17	GB6170-86	Nut	M16
18	GB97.1-86	Washer	16
19	CD6240-10-03	Clamping Bracket	
20	GB5780-86	Bolt	M16×80
21	CD6236-10-06	Support Shaft	
22	GB278-88	Bearing	80026

27. Lead Screw Guard



No.	Part No.	Name	Specification	Qty
1	CD6236-01F-05	Connect Sleeve		1
2	CD6236-01F-01	Protect Sleeve	1000	2
3	GB70-85	Socket Cap Screw	M5×12	4
4	CD6236-01F-02	Protect Sleeve	2000	2
5	GB70-85	Socket Cap Screw	M4×12	4
6	CD6236-01F-03	Connect Sleeve	1000、 1500	1
7	CD6236-01F-04	Connect Sleeve	2000	1

28. Chip Protection



No.	Part No.	Name	Specification	Qty
1	CD6240-20-02	Chip Cover		1
2	CD6240-20-09	Clamp		1
3	GB70-85	Screw	M4×10	21
4	GB97.1-85	Washer	4	18
5	CD6240-20-07	Chip Cover		1
6	CD6240-20-03	Chip Cover Plate		1
7	CD6240-20-06	Chip Cover Fixing Plate		1
8	GB80-85	Screw	M6×6	5
9	CD6240-20-05	Shaft		1
10	CD6240-20-03	Top Cover Plate	Select Purchase	1
11	CD6240-20-01	Main Block		1
12	CD6240-20-04	Lock for Switch Stop		1
13	GB70-85	Screw	M6×20	1
14	GB70-85	Screw	M6×16	3
15	CD6240-20-02	Chip Cover Plate		1
16		Switch		1
17	GB70-85	Screw	M4×30	2

MACHINERYHOUSE